

Product datasheet for **TA349181**

KIR2DS2 Rabbit Polyclonal Antibody

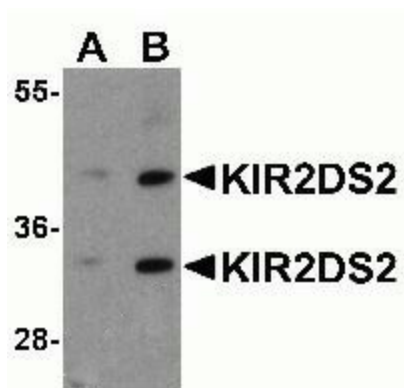
Product data:

Product Type:	Primary Antibodies
Applications:	IF, WB
Recommended Dilution:	WB: 1 - 2 ug/mL
Reactivity:	Human
Host:	Rabbit
Isotype:	IgG
Clonality:	Polyclonal
Immunogen:	KIR2DS2 antibody was raised against an 18 amino acid peptide near the carboxy terminus of human KIR2DS2. The immunogen is located within the last 50 amino acids of KIR2DS2.
Formulation:	PBS containing 0.02% sodium azide.
Concentration:	1 mg/ml
Purification:	KIR2DS2 antibody is affinity chromatography purified via peptide column.
Conjugation:	Unconjugated
Storage:	Store at -20°C as received.
Stability:	Stable for 12 months from date of receipt.
Predicted Protein Size:	Predicted: 28, 33, 37 kDa; Observed: 34, 42 kDa
Gene Name:	killer cell immunoglobulin like receptor, two Ig domains and short cytoplasmic tail 2
Database Link:	NP_036444 Entrez Gene 100132285 Human P43631
Background:	Killer cell immunoglobulin-like receptors (KIRs) are transmembrane glycoproteins expressed by natural killer cells and subsets of T cells (1). The KIR proteins are classified by the number of extracellular immunoglobulin domains and by whether they have a long (L) or short (S) cytoplasmic domain (2,3). KIR proteins are thought to play an important role in regulation of the immune response (3). KIR2DS2 downregulates the cytotoxicity of NK cells upon recognition of specific class I major histocompatibility complex (MHC) molecules on target cells and is a receptor on natural killer (NK) cells for HLA-C alleles (3,4).
Synonyms:	183Act1; CD158b; CD158J; cl-49; KIR-2DS2; NKAT-5; NKAT5

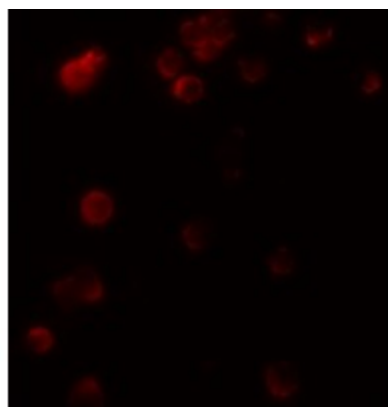


[View online »](#)

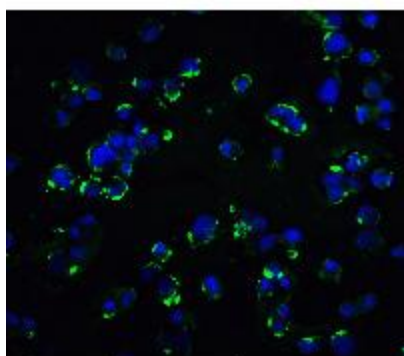
Product images:



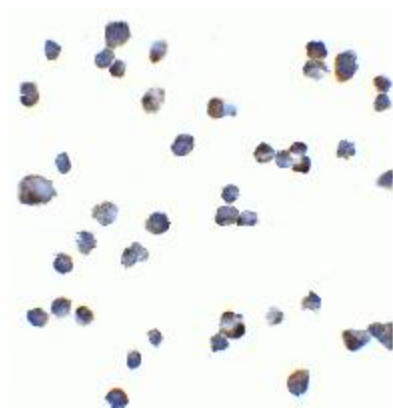
Western blot analysis of KIR2DS2 in 293 cell lysate with KIR2DS2 antibody at (A) 1 and (B) 2ug/ml.



Immunofluorescence of KIR2DS2 in 293 cells with KIR2DS2 antibody at 20ug/ml.



Immunofluorescence of KIR2DS2 in Hek293 cells with KIR2DS2 antibody at 20ug/ml.



Immunocytochemistry of KIR2DS2 in Hek293 cells with KIR2DS2 antibody at 5ug/ml.