

## Product datasheet for **TA349180**

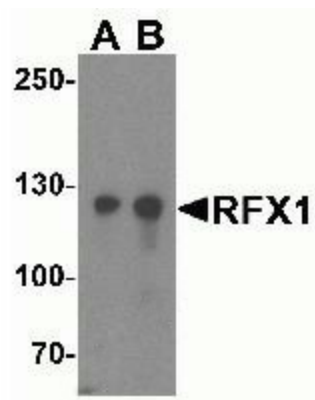
### RFX1 Rabbit Polyclonal Antibody

#### Product data:

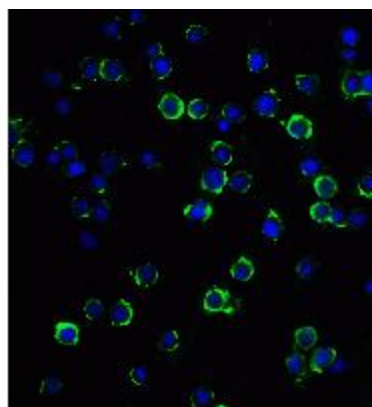
Product Type:	Primary Antibodies
Applications:	IF, WB
Recommended Dilution:	WB: 1 - 2 ug/mL
Reactivity:	Human
Host:	Rabbit
Isotype:	IgG
Clonality:	Polyclonal
Immunogen:	RFX1 antibody was raised against an 18 amino acid peptide near the carboxy terminus of human RFX1. The immunogen is located within the last 50 amino acids of RFX1.
Formulation:	PBS containing 0.02% sodium azide.
Concentration:	1 mg/ml
Purification:	RFX1 antibody is affinity chromatography purified via peptide column.
Conjugation:	Unconjugated
Storage:	Store at -20°C as received.
Stability:	Stable for 12 months from date of receipt.
Predicted Protein Size:	Predicted: 108 kDa; Observed: 125 kDa
Gene Name:	regulatory factor X1
Database Link:	<a href="#">NP_002909</a> <a href="#">Entrez Gene 5989 Human</a> <a href="#">P22670</a>
Background:	RFX1 is a member of the regulatory factor X protein family, which are transcription factors that contain a highly-conserved winged helix DNA binding domain and the D region found in the C-terminal part of these proteins which facilitates dimerization (1,2). RFX1 is structurally related to regulatory factors X2, X3, X4, and X5 (3). RFX1 is a regulatory factor essential for MHC class II genes expression and can bind to an inverted repeat that is required for expression of hepatitis B virus genes (4). Recent study identifies RFX1 may play a tumor suppressor role in HCC as autophagy mediator (5).
Synonyms:	Q6; QSCN6


[View online »](#)

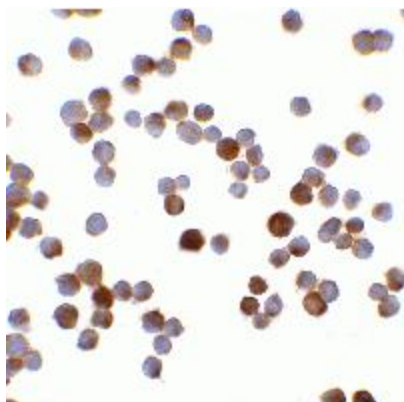


**Product images:**


Western blot analysis of RFX1 in HeLa cell lysate with RFX1 antibody at (A) 1 and (B) 2ug/ml.

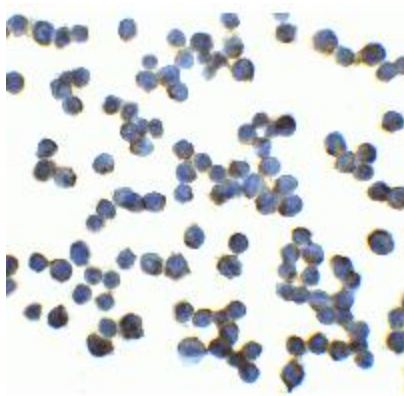


Immunofluorescence of RFX1 in Hela cells with RFX1 antibody at 20ug/ml.



Immunocytochemistry of RFX1 in Hela cells with RFX1 antibody at 5ug/ml.





Immunocytochemistry of RFX1 in HeLa cells with RFX1 at 5ug/ml.