

## Product datasheet for **TA349177**

### MAGEA4 Rabbit Polyclonal Antibody

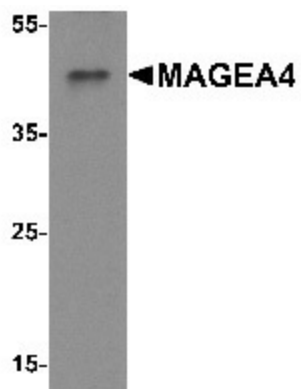
#### Product data:

Product Type:	Primary Antibodies
Applications:	WB
Recommended Dilution:	WB: 1 - 2 ug/mL
Reactivity:	Human, Mouse, Rat
Host:	Rabbit
Isotype:	IgG
Clonality:	Polyclonal
Immunogen:	MAGEA4 antibody was raised against a 16 amino acid peptide near the amino terminus of human MAGEA4.
Formulation:	PBS containing 0.02% sodium azide.
Concentration:	1 mg/ml
Purification:	MAGEA4 antibody is affinity chromatography purified via peptide column.
Conjugation:	Unconjugated
Storage:	Store at -20°C as received.
Stability:	Stable for 12 months from date of receipt.
Predicted Protein Size:	Predicted: 35 kDa; Observed: 45 kDa
Gene Name:	MAGE family member A4
Database Link:	<a href="#">NP_001011550</a> <a href="#">Entrez Gene 4103 Human P43358</a>
Background:	MAGEA4 is a member of the melanoma-associated antigen family that consists of a number of antigens recognized by cytotoxic T lymphocytes (1). MAGEA4 may serve as a target for antitumoral vaccination and may play a role in embryonal development and tumor transformation or aspects of tumor progression. It is expressed in many tumors of several types, such as melanoma, head and neck squamous cell carcinoma, lung carcinoma and breast carcinoma and have been implicated in some hereditary disorders, such as dyskeratosis congenital (2-4).
Synonyms:	DPK; HOHO; K2P1; K2p1.1; KCNO1; TWIK-1; TWIK1



[View online »](#)

## Product images:



Western blot analysis of MAGEA4 in A431 cell lysate with MAGEA4 antibody at 1 ug/mL.