

Product datasheet for **TA349176**

PACS2 Rabbit Polyclonal Antibody

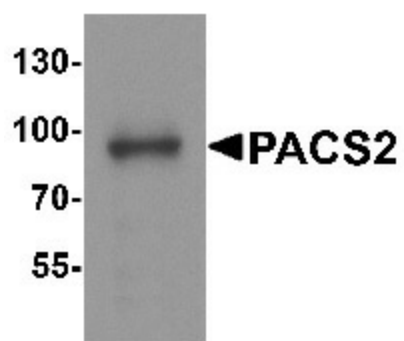
Product data:

Product Type:	Primary Antibodies
Applications:	WB
Recommended Dilution:	WB: 1 - 2 ug/mL
Reactivity:	Human, Mouse, Rat
Host:	Rabbit
Isotype:	IgG
Clonality:	Polyclonal
Immunogen:	PACS2 antibody was raised against a 17 amino acid peptide near the center of human PACS2.
Formulation:	PBS containing 0.02% sodium azide.
Concentration:	1 mg/ml
Purification:	PACS2 antibody is affinity chromatography purified via peptide column.
Conjugation:	Unconjugated
Storage:	Store at -20°C as received.
Stability:	Stable for 12 months from date of receipt.
Predicted Protein Size:	Predicted: 98 kDa; Observed: 95 kDa
Gene Name:	phosphofurin acidic cluster sorting protein 2
Database Link:	NP_056012 Entrez Gene 23241 Human Q86VP3
Background:	PACS2 (phosphofurin acidic cluster sorting protein-2), PACS1L, is an 889 amino acid protein that localizes to both the mitochondrion and the lumen of the endoplasmic reticulum (ER) and belongs to the PACS family (1,2). It is expressed in a broad range of tissues with highest expression in skeletal muscle, brain, heart, testis and pancreas (2,). PACS2 interacts with Polycystin-2 and BID and functions as a sorting protein that regulates mitochondria-ER communication and is thought to be involved in ion channel trafficking, specifically direct cluster-containing ion channels to distinct subcellular compartments (3-5).
Synonyms:	RNF155



[View online »](#)

Product images:



Western blot analysis of PACS2 in mouse brain tissue lysate with PACS2 antibody at 1 ug/mL.