

Product datasheet for **TA349173**

ADAM29 Rabbit Polyclonal Antibody

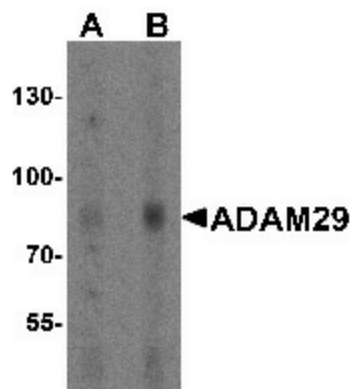
Product data:

Product Type:	Primary Antibodies
Applications:	WB
Recommended Dilution:	WB: 1 - 2 ug/mL
Reactivity:	Human
Host:	Rabbit
Isotype:	IgG
Clonality:	Polyclonal
Immunogen:	ADAM29 antibody was raised against a 19 amino acid peptide near the carboxy terminus of human ADAM29.
Formulation:	PBS containing 0.02% sodium azide.
Concentration:	1 mg/ml
Purification:	ADAM29 antibody is affinity chromatography purified via peptide column.
Conjugation:	Unconjugated
Storage:	Store at -20°C as received.
Stability:	Stable for 12 months from date of receipt.
Predicted Protein Size:	Predicted: 76 kDa; Observed: 80 kDa
Gene Name:	ADAM metallopeptidase domain 29
Database Link:	NP_055084 Entrez Gene 11086 Human Q9UKF5
Background:	The ADAM (a disintegrin and metalloprotease) protein family plays a role in cell-cell and cell-matrix interface related processes, including fertilization, muscle fusion, secretion of TNFalpha (tumor necrosis factor alpha), and modulation of the neurogenic function of Notch and Delta (1-3). ADAM29 contains one disintegrin domain, one EGF-like domain and one peptidase M12B domain (2). It is highly expressed in testes (3) and may be involved in spermatogenesis and fertilization (4,5).
Synonyms:	ARM-1; ARM1; GP110



[View online »](#)

Product images:



Western blot analysis of ADAM29 in human bladder tissue lysate with ADAM29 antibody at (A) 1 and (B) 2 ug/mL.