

Product datasheet for **TA349171**

SFRS3 (SRSF3) Rabbit Polyclonal Antibody

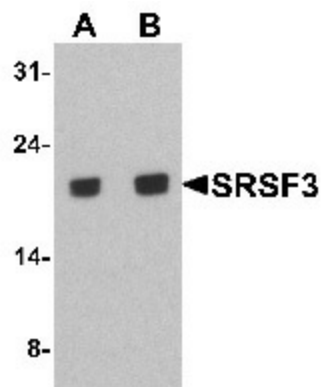
Product data:

Product Type:	Primary Antibodies
Applications:	WB
Recommended Dilution:	WB: 1 - 2 ug/mL
Reactivity:	Human, Mouse, Rat
Host:	Rabbit
Isotype:	IgG
Clonality:	Polyclonal
Immunogen:	SRSF3 antibody was raised against a 19 amino acid peptide near the center of human SRSF3.
Formulation:	PBS containing 0.02% sodium azide.
Concentration:	1 mg/ml
Purification:	SRSF3 antibody is affinity chromatography purified via peptide column.
Conjugation:	Unconjugated
Storage:	Store at -20°C as received.
Stability:	Stable for 12 months from date of receipt.
Predicted Protein Size:	Predicted: 18 kDa; Observed: 19 kDa
Gene Name:	serine/arginine-rich splicing factor 3
Database Link:	NP_003008 Entrez Gene 6428 Human P84103
Background:	SRSF3, a member of the serine/arginine (SR)-rich family of pre-mRNA splicing factors which constitute part of the spliceosome, may be involved in RNA processing in relation with cellular proliferation and/or maturation (1,2). Each of these factors contains an RNA recognition motif (RRM) for binding RNA and an RS domain for binding other proteins (3). The RS domain is rich in serine and arginine residues and facilitates interaction between different SR splicing factors. In addition to being critical for mRNA splicing, the SR proteins have also been shown to be involved in mRNA export from the nucleus and in translation (3,4).
Synonyms:	EFC; RFX



[View online »](#)

Product images:



Western blot analysis of SRSF3 in K562 cell lysate with SRSF3 antibody at (A) 1 and (B) 2 ug/mL.