

Product datasheet for **TA349170**

ARID1A Rabbit Polyclonal Antibody

Product data:

Product Type:	Primary Antibodies
Applications:	WB
Recommended Dilution:	WB: 1 - 2 ug/mL
Reactivity:	Human, Mouse, Rat
Host:	Rabbit
Isotype:	IgG
Clonality:	Polyclonal
Immunogen:	ARID1A antibody was raised against an 18 amino acid peptide near the amino terminus of human ARID1A.
Formulation:	PBS containing 0.02% sodium azide.
Concentration:	1 mg/ml
Purification:	ARID1A antibody is affinity chromatography purified via peptide column.
Conjugation:	Unconjugated
Storage:	Store at -20°C as received.
Stability:	Stable for 12 months from date of receipt.
Predicted Protein Size:	Predicted: 133, 227, 251 kDa; Observed: 130, 260 kD
Gene Name:	AT-rich interaction domain 1A
Database Link:	NP_006006 Entrez Gene 93760 Mouse Entrez Gene 297867 Rat Entrez Gene 8289 Human Q14497



[View online »](#)

Background:

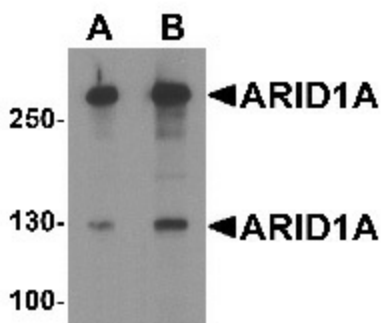
The ARID1A protein is a member of the SWI/SNF family, whose members are thought to regulate transcription of certain genes by altering the chromatin structure around those genes. ARID1A is part of the large ATP-dependent chromatin remodeling complex SNF/SWI, which is required for transcriptional activation of genes normally repressed by chromatin (1). It possesses a DNA-binding domain that can specifically bind an AT-rich DNA sequence known to be recognized by a SNF/SWI complex at the beta-globin locus. The C-terminus of the protein can stimulate glucocorticoid receptor-dependent transcriptional activation. It is thought that ARID1A confers specificity to the SNF/SWI complex and may recruit the complex to its targets through either protein-DNA or protein-protein interactions (2).

Synonyms:

B120; BAF250; BAF250a; BM029; C1orf4; ELD; hELD; hOSA1; MRD14; OSA1; P270; SMARCF1

Protein Families:

Druggable Genome

Product images:


Western blot analysis of ARID1A in SK-N-SH cell lysate with ARID1A antibody at (A) 1 and (B) 2 ug/mL.