

Product datasheet for **TA349168**

C2CD3 Rabbit Polyclonal Antibody

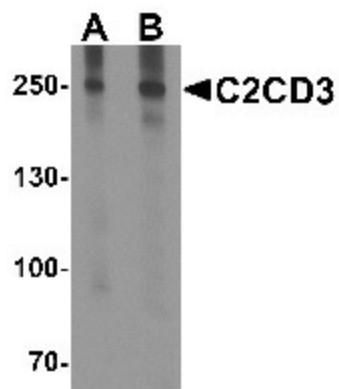
Product data:

Product Type:	Primary Antibodies
Applications:	WB
Recommended Dilution:	WB: 1 - 2 ug/mL
Reactivity:	Human, Mouse, Rat
Host:	Rabbit
Isotype:	IgG
Clonality:	Polyclonal
Immunogen:	C2CD3 antibody was raised against an 18 amino acid peptide near the center of human C2CD3.
Formulation:	PBS containing 0.02% sodium azide.
Concentration:	1 mg/ml
Purification:	C2CD3 antibody is affinity chromatography purified via peptide column.
Conjugation:	Unconjugated
Storage:	Store at -20°C as received.
Stability:	Stable for 12 months from date of receipt.
Predicted Protein Size:	Predicted: 216, 259 kDa; Observed: 255 kDa
Gene Name:	C2 calcium-dependent domain containing 3
Database Link:	NP_001273506 Entrez Gene 26005 Human Q4AC94
Background:	C2CD3, a putative calcium-dependent lipid-binding protein, is an essential regulator of intracellular transduction of the Hedgehog signal (1). It is localized at the basal body of cilia, mediates calcium-dependent vesicular transport and/or recruitment of proteins and regulates cilium biogenesis by promoting the assembly of centriolar distal appendages critical for docking ciliary vesicles and recruiting other essential ciliogenic proteins (2,3). C2CD3 directly promotes centriole elongation and OFD1 acts as a negative regulator of C2CD3 (4,5).
Synonyms:	C2 calcium-dependent domain containing 3, C2 domain-containing protein 3



[View online »](#)

Product images:



Western blot analysis of C2CD3 in EL4 cell lysate with C2CD3 antibody at (A) 1 and (B) 2 ug/mL.