

Product datasheet for **TA349167**

AJAP1 Rabbit Polyclonal Antibody

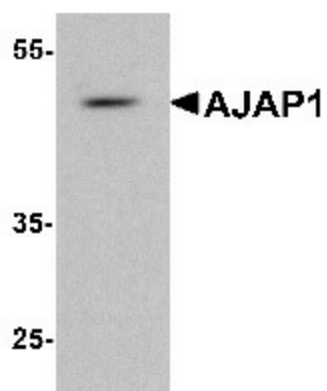
Product data:

Product Type:	Primary Antibodies
Applications:	WB
Recommended Dilution:	WB: 1 - 2 ug/mL
Reactivity:	Human, Mouse, Rat
Host:	Rabbit
Isotype:	IgG
Clonality:	Polyclonal
Immunogen:	AJAP1 antibody was raised against an 18 amino acid peptide near the carboxy terminus of human AJAP1.
Formulation:	PBS containing 0.02% sodium azide.
Concentration:	1 mg/ml
Purification:	AJAP1 antibody is affinity chromatography purified via peptide column.
Conjugation:	Unconjugated
Storage:	Store at -20°C as received.
Stability:	Stable for 12 months from date of receipt.
Predicted Protein Size:	Predicted: 45 kDa; Observed: 48 kDa
Gene Name:	adherens junctions associated protein 1
Database Link:	NP_061324 Entrez Gene 55966 Human Q9UKB5
Background:	The Adherens Junction Associated Protein 1 (AJAP1) plays a key role in cell adhesion and cell migration (1). It is a transmembrane protein found on the basolateral surface of epithelium and expressed by multiple types of epithelium (1,2). AJAP1 interacts with E-Cadherin and appears to promote the internalization of E-Cadherin upon growth factor stimulation (3). This facilitates the dissolution of adherens junctions with an increase in cell motility (3,4).
Synonyms:	GPR69B; TASP



[View online »](#)

Product images:



Western blot analysis of AJAP1 in rat liver tissue lysate with AJAP1 antibody at 1 ug/mL.