

Product datasheet for **TA349165**

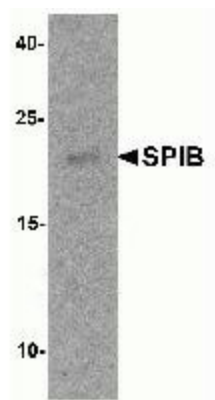
SPIB Rabbit Polyclonal Antibody

Product data:

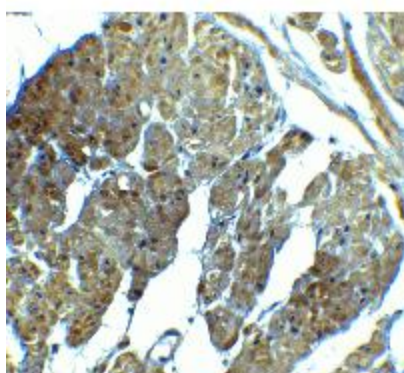
Product Type:	Primary Antibodies
Applications:	IF, IHC, WB
Recommended Dilution:	WB: 1 - 2 ug/mL
Reactivity:	Human, Mouse, Rat
Host:	Rabbit
Isotype:	IgG
Clonality:	Polyclonal
Immunogen:	SPIB antibody was raised against a 17 amino acid peptide near the carboxy terminus of human SPIB. The immunogen is located within amino acids 200 - 250 of SPIB.
Formulation:	PBS containing 0.02% sodium azide.
Concentration:	1 mg/ml
Purification:	SPIB antibody is affinity chromatography purified via peptide column.
Conjugation:	Unconjugated
Storage:	Store at -20°C as received.
Stability:	Stable for 12 months from date of receipt.
Predicted Protein Size:	Predicted: 19, 25, 29 kDa; Observed: 20 kDa
Gene Name:	Spi-B transcription factor
Database Link:	NP_003112 Entrez Gene 6689 Human Q01892
Background:	SPIB is a member of the ETS transcription factor family that influences lymphoid development and activity and binds the consensus DNA site GGA (A/T) through a unique winged helix-turn-helix motif known as the ETS domain (1). SPIB is found in hematopoietic cells such as B cells and plasmacytoid dendritic cells (DC) (2,3). It promotes the development of plasmacytoid dendritic cells (pDCs) or natural interferon (IFN)-producing cells. SPIB may be required for B-cell receptor (BCR) signaling, which is necessary for normal B-cell development and antigenic stimulation (3,4).
Synonyms:	EVI16



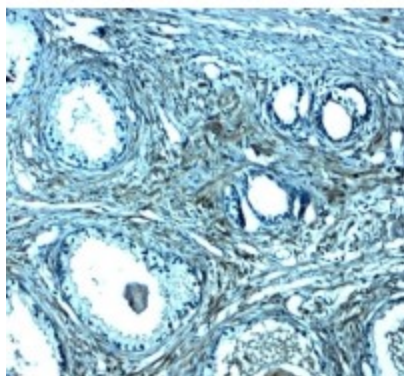
[View online »](#)

Product images:

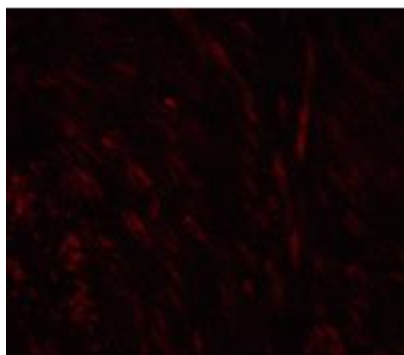
Western blot analysis of SPIB in human prostate tissue lysate with SPIB antibody at 1ug/ml.



Immunohistochemistry of SPIB in human prostate tissue with SPIB antibody at 2.5ug/ml.



Immunohistochemistry of SPIB in human prostate tissue with SPIB antibody at 2.5ug/ml.



Immunofluorescence of SPIB in human prostate tissue with SPIB Antibody at 20ug/ml.