

Product datasheet for **TA349164**

SNRPN Rabbit Polyclonal Antibody

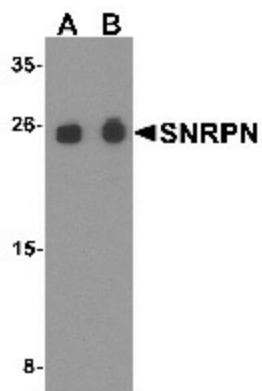
Product data:

Product Type:	Primary Antibodies
Applications:	IF, IHC, WB
Recommended Dilution:	WB: 0.5 - 1 ug/mL, IHC: 5 ug/mL, IF: 20 ug/mL
Reactivity:	Human, Mouse, Rat
Host:	Rabbit
Isotype:	IgG
Clonality:	Polyclonal
Immunogen:	SNRPN antibody was raised against a 20 amino acid peptide near the amino terminus of human SNRPN.
Formulation:	PBS containing 0.02% sodium azide.
Concentration:	1 mg/ml
Purification:	SNRPN antibody is affinity chromatography purified via peptide column.
Conjugation:	Unconjugated
Storage:	Store at -20°C as received.
Stability:	Stable for 12 months from date of receipt.
Predicted Protein Size:	Predicted: 26 kDa; Observed: 25 kDa
Gene Name:	small nuclear ribonucleoprotein polypeptide N
Database Link:	NP_003088 Entrez Gene 6638 Human P63164
Background:	The small nuclear riboprotein-associated protein N (SNRPN) is one polypeptide of a small nuclear ribonucleoprotein complex and belongs to the snRNP SMB/SMN family. SNRPN plays a role in pre-mRNA processing and alternative splicing (1). SNRPN arises from a bicistronic transcript that also encodes a protein identified as the SNRPN upstream reading frame (SNURF) (2). Mutations or deletions in the SNRPN gene may be linked to responsible for Angelman syndrome or Prader-Willi syndrome (3).
Synonyms:	NACP; PARK1; PARK4; PD1

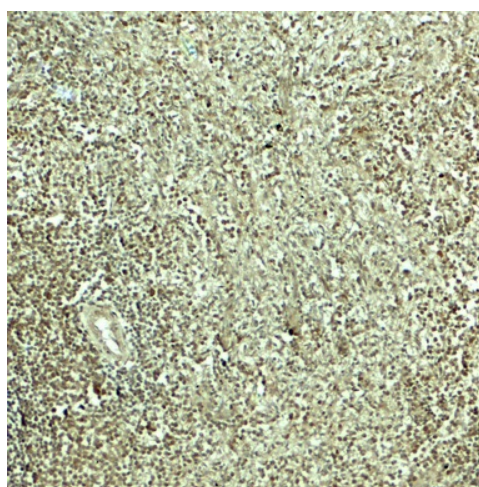


[View online »](#)

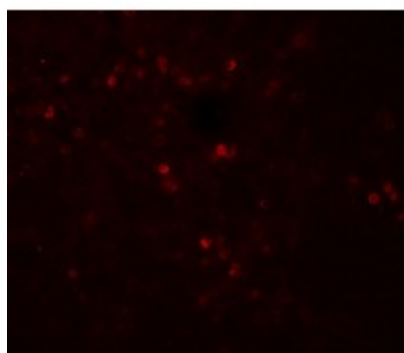
Product images:



Western blot analysis of SNRPN in THP-1 cell lysate with SNRPN antibody at (A) 0.5 and (B) 1 ug/mL.



Immunohistochemistry of SNRPN in human spleen tissue with SNRPN antibody at 5 ug/mL.



Immunofluorescence of SNRPN in human spleen tissue with SNRPN antibody at 20 ug/mL.