

## Product datasheet for **TA349163**

### RSPO3 Rabbit Polyclonal Antibody

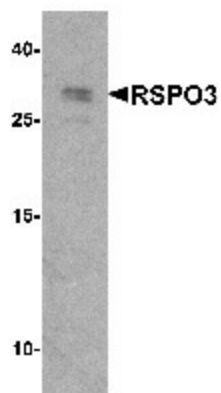
#### Product data:

Product Type:	Primary Antibodies
Applications:	IF, WB
Recommended Dilution:	WB: 1 - 2 ug/mL, IHC: 5 ug/mL, IF: 20 ug/mL
Reactivity:	Human, Mouse
Host:	Rabbit
Isotype:	IgG
Clonality:	Polyclonal
Immunogen:	RSPO3 antibody was raised against a 19 amino acid peptide near the carboxy terminus of human RSPO3.
Formulation:	PBS containing 0.02% sodium azide.
Concentration:	1 mg/ml
Purification:	RSPO3 antibody is affinity chromatography purified via peptide column.
Conjugation:	Unconjugated
Storage:	Store at -20°C as received.
Stability:	Stable for 12 months from date of receipt.
Predicted Protein Size:	Predicted: 30 kDa; Observed: 30 kDa
Gene Name:	R-spondin 3
Database Link:	<a href="#">NP_116173</a> <a href="#">Entrez Gene 84870 Human</a> <a href="#">Q9BXY4</a>
Background:	RSPO3 is a member of the R-spondin family and plays a role in the regulation of Wnt (wingless-type MMTV integration site family)/beta-catenin and Wnt/planar cell polarity (PCP) signaling pathways, which are involved in development, cell growth and disease pathogenesis (1,2). RSPO3 has been shown to be involved in regulating the balance between angioblast and blood cell specification during embryonic vasculogenesis and angiogenesis and may be involved in tumor development (3,4).
Synonyms:	PTPSTEP; STEP



[View online »](#)

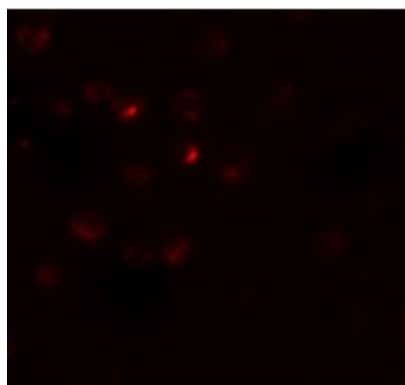
## Product images:



Western blot analysis of RSPO3 in 293 cell lysate with RSPO3 antibody at 1 ug/mL.



Immunocytochemistry of RSPO3 in 293 cells with RSPO3 antibody at 5 ug/mL.



Immunofluorescence of RSPO3 in 293 cells with RSPO3 antibody at 20 ug/mL.