

Product datasheet for **TA349159**

MKRN3 Rabbit Polyclonal Antibody

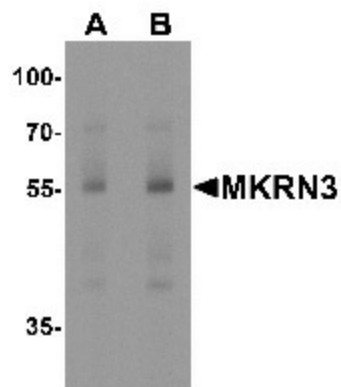
Product data:

Product Type:	Primary Antibodies
Applications:	IF, WB
Recommended Dilution:	WB: 1 - 2 ug/mL, IF: 20 ug/mL
Reactivity:	Human, Mouse, Rat
Host:	Rabbit
Isotype:	IgG
Clonality:	Polyclonal
Immunogen:	MKRN3 antibody was raised against a 17 amino acid peptide near the carboxy terminus of human MKRN3.
Formulation:	PBS containing 0.02% sodium azide.
Concentration:	1 mg/ml
Purification:	MKRN3 antibody is affinity chromatography purified via peptide column.
Conjugation:	Unconjugated
Storage:	Store at -20°C as received.
Stability:	Stable for 12 months from date of receipt.
Predicted Protein Size:	Predicted: 55 kDa; Observed: 55 kDa
Gene Name:	makorin ring finger protein 3
Database Link:	NP_005655 Entrez Gene 7681 Human P18206
Background:	The Makorin ring finger 3 (MKRN3) protein contains a RING (C3HC4) zinc finger motif and several C3H zinc finger motifs. The MKRN3 gene is intronless and imprinted, with expression only from the paternal allele. Disruption of the imprinting at this locus may contribute to Prader-Willi syndrome (1), but a deletion of the gene does not (2). A deficiency of MKRN3 has been shown to cause central precocious puberty in humans (3).
Synonyms:	CMD1W; CMH15; HEL114; MV; MVCL

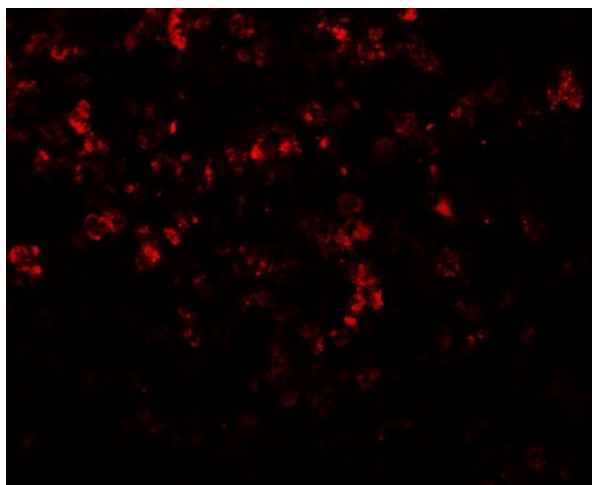


[View online »](#)

Product images:



Western blot analysis of MKRN3 in human spleen tissue lysate with MKRN3 antibody at (A)1 and (B) 2 ug/mL.



Immunofluorescence of MKRN3 in human spleen tissue with MKRN3 antibody at 20 ug/mL.