

Product datasheet for **TA349158**

HOPX Rabbit Polyclonal Antibody

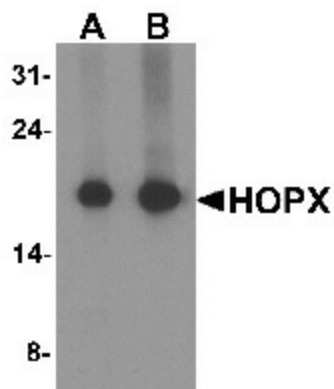
Product data:

Product Type:	Primary Antibodies
Applications:	IF, IHC, WB
Recommended Dilution:	WB: 1 - 2 ug/mL, IHC: 5 ug/mL, IF: 20 ug/mL
Reactivity:	Human
Host:	Rabbit
Isotype:	IgG
Clonality:	Polyclonal
Immunogen:	HOPX antibody was raised against a 16 amino acid peptide near the amino terminus of human HOPX.
Formulation:	PBS containing 0.02% sodium azide.
Concentration:	1 mg/ml
Purification:	HOPX antibody is affinity chromatography purified via peptide column.
Conjugation:	Unconjugated
Storage:	Store at -20°C as received.
Stability:	Stable for 12 months from date of receipt.
Predicted Protein Size:	Predicted: 12 kDa; Observed: 183 kDa
Gene Name:	HOP homeobox
Database Link:	NP_001138932 Entrez Gene 84525 Human Q9BPY8
Background:	HOPX is a small homeodomain protein that lacks normally conserved residues required for DNA binding (1). It is thought to act downstream of NKX2-5 and modulates serum response factor (SRF)-dependent cardiac-specific gene expression and cardiac development (1). HOPX also acts a tumor suppressor gene in multiple tumors and cancer cell lines (2,3). HOPX has been reported to regulate the proliferation/differentiation homeostasis in different cell types, including keratinocytes (4).
Synonyms:	Lobe; PRAS40

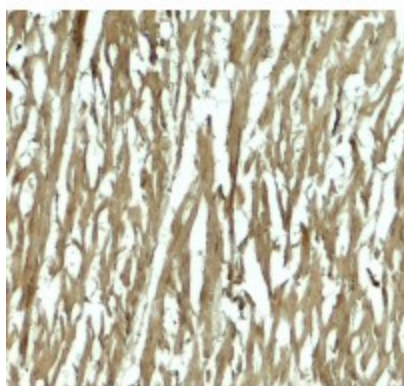


[View online »](#)

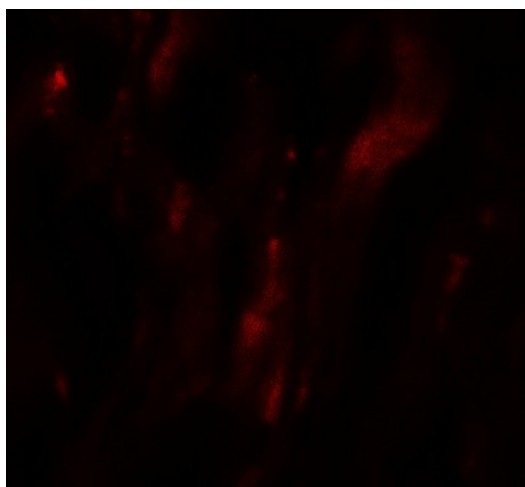
Product images:



Western blot analysis of HOPX in human brain tissue lysate with HOPX antibody at (A) 1 and (B) 2 ug/mL.



Immunohistochemistry of HOPX in human heart tissue with HOPX antibody at 5 ug/mL.



Immunofluorescence of HOPX in human heart tissue with HOPX antibody at 20 ug/mL.