

Product datasheet for **TA349155**

Cysteine Dioxygenase Type 1 (CDO1) Rabbit Polyclonal Antibody

Product data:

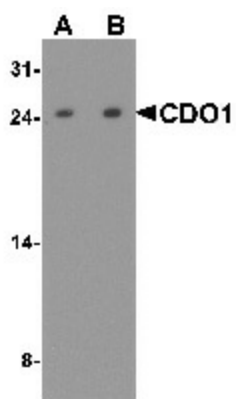
Product Type:	Primary Antibodies
Applications:	WB
Recommended Dilution:	WB: 1 - 2 ug/mL
Reactivity:	Human, Mouse, Rat
Host:	Rabbit
Isotype:	IgG
Clonality:	Polyclonal
Immunogen:	CDO1 antibody was raised against a 19 amino acid peptide near the amino terminus of human CDO1.
Formulation:	PBS containing 0.02% sodium azide.
Concentration:	1 mg/ml
Purification:	CDO1 antibody is affinity chromatography purified via peptide column.
Conjugation:	Unconjugated
Storage:	Store at -20°C as received.
Stability:	Stable for 12 months from date of receipt.
Predicted Protein Size:	Predicted: 22 kDa; Observed: 24 kDa
Gene Name:	cysteine dioxygenase type 1
Database Link:	NP_001792 Entrez Gene 12583 Mouse Entrez Gene 81718 Rat Entrez Gene 1036 Human Q16878
Background:	CDO1 (cysteine dioxygenase, type I) belongs to the cysteine dioxygenase family and is involved in organosulfur biosynthesis (1). CDO1 functions as a dioxygenase that uses iron and zinc as cofactors to catalyze the conversion of L-cysteine and oxygen to 3-sulfinoalanine (1,2). CDO1 exists as a monomer and is expressed at high levels in liver and placenta and at lower levels in brain, pancreas and heart (1). CDO1 is involved in pyruvate-, sulfate- and taurine-related metabolic pathways and is a crucial regulator of cysteine concentrations within the cell (3,4).
Synonyms:	cysteine dioxygenase; cysteine dioxygenase type I; type I



[View online »](#)

Protein Pathways: Cysteine and methionine metabolism, Metabolic pathways, Taurine and hypotaurine metabolism

Product images:



Western blot analysis of CDO1 in rat liver tissue lysate with CDO1 antibody at (A) 1 and (B) 2 ug/mL.