

## Product datasheet for **TA349154**

### SLC29A4 Rabbit Polyclonal Antibody

#### Product data:

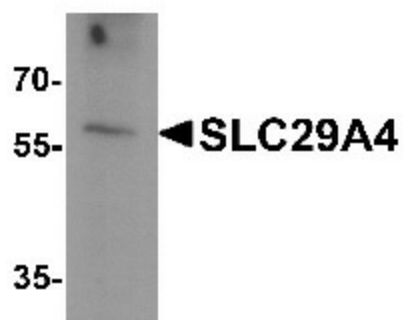
Product Type:	Primary Antibodies
Applications:	IF, IHC, WB
Recommended Dilution:	WB: 1 - 2 ug/mL, IHC: 5 ug/mL, IF: 20 ug/mL
Reactivity:	Human
Host:	Rabbit
Isotype:	IgG
Clonality:	Polyclonal
Immunogen:	SLC29A4 antibody was raised against an 18 amino acid peptide near the center of human SLC29A4.
Formulation:	PBS containing 0.02% sodium azide.
Concentration:	1 mg/ml
Purification:	SLC29A4 antibody is affinity chromatography purified via peptide column.
Conjugation:	Unconjugated
Storage:	Store at -20°C as received.
Stability:	Stable for 12 months from date of receipt.
Predicted Protein Size:	Predicted: 58 kDa; Observed: 58 kDa
Gene Name:	solute carrier family 29 member 4
Database Link:	<a href="#">NP_001035751</a> <a href="#">Entrez Gene 222962 Human</a> <a href="#">Q7RTT9</a>
Background:	SLC29A4 is a member of the equilibrative nucleoside transporter family which plays a key role in nucleoside and nucleobase uptake for salvage pathways of nucleotide synthesis (1,2). SLC29A4 is a transmembrane protein that catalyzes the reuptake of monoamines into presynaptic neurons, thus determining the intensity and duration of monoamine neural signaling (1,3). SLC29A4 has been shown to transport several compounds, including serotonin, dopamine, and the neurotoxin 1-methyl-4-phenylpyridinium (3).
Synonyms:	ENT4; PMAT



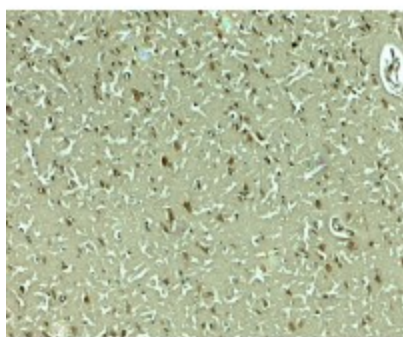
[View online »](#)

Protein Families: Transmembrane

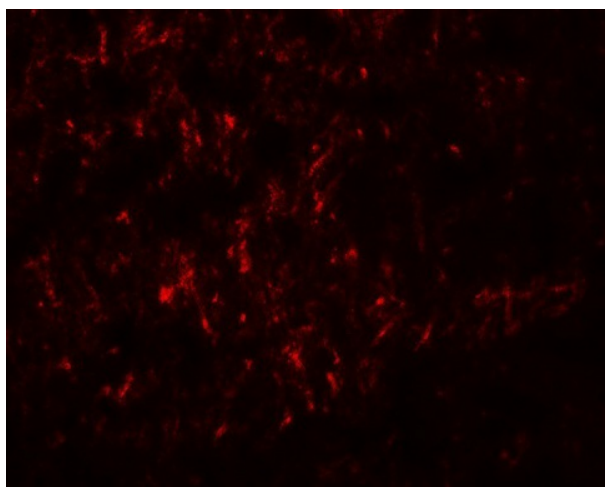
### Product images:



Western blot analysis of SLC29A4 in SK-N-SH cell lysate with SLC29A4 antibody at 1 ug/mL.



Immunohistochemistry of SLC29A4 in human brain tissue with SLC29A4 antibody at 5 ug/mL.



Immunofluorescence of SLC29A4 in human brain tissue with SLC29A4 antibody at 20 ug/mL.