

Product datasheet for **TA349153**

SLC29A3 Rabbit Polyclonal Antibody

Product data:

Product Type:	Primary Antibodies
Applications:	IF, IHC, WB
Recommended Dilution:	WB: 1 - 2 ug/mL, IHC: 5 ug/mL, IF: 20 ug/mL
Reactivity:	Human, Mouse, Rat
Host:	Rabbit
Isotype:	IgG
Clonality:	Polyclonal
Immunogen:	SLC29A3 antibody was raised against a 19 amino acid peptide near the amino terminus of human SLC29A3.
Formulation:	PBS containing 0.02% sodium azide.
Concentration:	1 mg/ml
Purification:	SLC29A3 antibody is affinity chromatography purified via peptide column.
Conjugation:	Unconjugated
Storage:	Store at -20°C as received.
Stability:	Stable for 12 months from date of receipt.
Predicted Protein Size:	Predicted: 52 kDa; Observed: 57 kDa
Gene Name:	solute carrier family 29 member 3
Database Link:	NP_060814 Entrez Gene 71279 MouseEntrez Gene 353307 RatEntrez Gene 55315 Human Q9BZD2

Background: SLC29A3 is a member of the equilibrative nucleoside transporter family which plays a key role in nucleoside and nucleobase uptake for salvage pathways of nucleotide synthesis (1,2). SLC29A3 is a transmembrane glycoprotein that localizes to the lysosomal membrane and is a broad selectivity, low affinity nucleoside transporter (3). Mutations in the SLC29A3 gene have been associated with H syndrome, which is characterized by cutaneous hyperpigmentation and hypertrichosis, hepatosplenomegaly, heart anomalies, and hypogonadism (4). A related disorder, PHID (pigmented hypertrichosis with insulin-dependent diabetes mellitus), has also been associated with mutations at this locus (5).

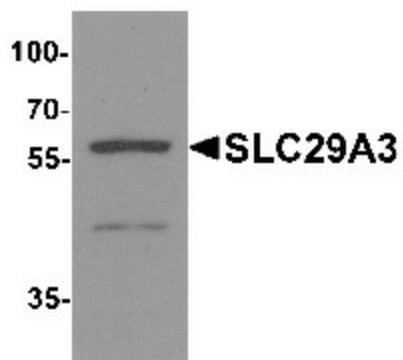


[View online »](#)

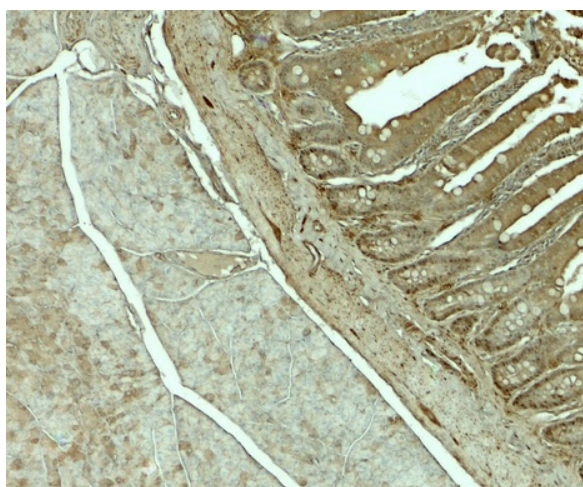
Synonyms: ENT3; HCLAP; HJCD; PHID

Protein Families: Transmembrane

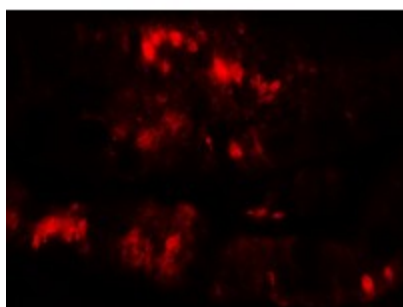
Product images:



Western blot analysis of SLC29A3 in mouse bladder tissue lysate with SLC29A3 antibody at 1 ug/mL.



Immunohistochemistry of SLC29A3 in rat colon tissue with SLC29A3 antibody at 5 ug/mL.



Immunofluorescence of SLC29A3 in rat colon muscle tissue with SLC29A3 antibody at 20 ug/mL.