

Product datasheet for **TA349152**

ENT2 (SLC29A2) Rabbit Polyclonal Antibody

Product data:

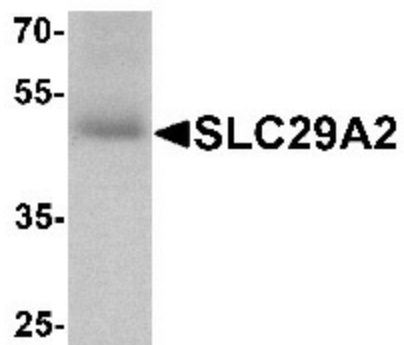
| | |
|-------------------------|--|
| Product Type: | Primary Antibodies |
| Applications: | WB |
| Recommended Dilution: | WB: 1 - 2 ug/mL |
| Reactivity: | Human |
| Host: | Rabbit |
| Isotype: | IgG |
| Clonality: | Polyclonal |
| Immunogen: | SLC29A2 antibody was raised against a 19 amino acid peptide near the center of human SLC29A2. |
| Formulation: | PBS containing 0.02% sodium azide. |
| Concentration: | 1 mg/ml |
| Purification: | SLC29A2 antibody is affinity chromatography purified via peptide column. |
| Conjugation: | Unconjugated |
| Storage: | Store at -20°C as received. |
| Stability: | Stable for 12 months from date of receipt. |
| Predicted Protein Size: | Predicted: 50 kDa; Observed: 50 kDa |
| Gene Name: | solute carrier family 29 member 2 |
| Database Link: | NP_001523 Entrez Gene 3177 Human Q14542 |
| Background: | SLC29A2 is a member of the equilibrative nucleoside transporter family which plays a key role in nucleoside and nucleobase uptake for salvage pathways of nucleotide synthesis (1,2). SLC29A2 is a transmembrane glycoprotein that mediates the cellular uptake of nucleosides from the surrounding medium (3). As a nucleoside transporter, SLC29A2 plays an important role in the uptake of nucleoside-based anti-cancer drugs; polymorphisms of point mutations in the gene encoding this protein may affect the efficacy of these drugs (4). |
| Synonyms: | DER12; ENT2; HNP36 |



[View online »](#)

Protein Families: Transmembrane

Product images:



Western blot analysis of SLC29A2 in human bladder tissue lysate with SLC29A2 antibody at 1 ug/mL.