

Product datasheet for **TA349151**

ENT1 (SLC29A1) Rabbit Polyclonal Antibody

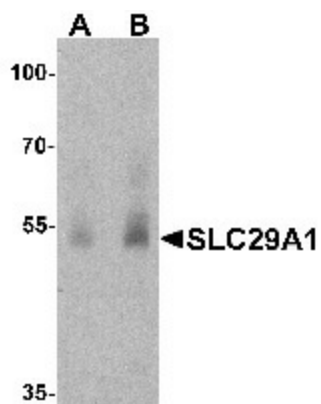
Product data:

Product Type:	Primary Antibodies
Applications:	IF, IHC, WB
Recommended Dilution:	WB: 1 - 2 ug/mL, IHC: 5 ug/mL, IF: 20 ug/mL
Reactivity:	Human
Host:	Rabbit
Isotype:	IgG
Clonality:	Polyclonal
Immunogen:	SLC29A1 antibody was raised against a 17 amino acid peptide near the center of human SLC29A1.
Formulation:	PBS containing 0.02% sodium azide.
Concentration:	1 mg/ml
Purification:	SLC29A1 antibody is affinity chromatography purified via peptide column.
Conjugation:	Unconjugated
Storage:	Store at -20°C as received.
Stability:	Stable for 12 months from date of receipt.
Predicted Protein Size:	Predicted: 50 kDa; Observed: 53 kDa
Gene Name:	solute carrier family 29 member 1 (Augustine blood group)
Database Link:	NP_004946 Entrez Gene 2030 Human Q99808
Background:	SLC29A1 is a member of the equilibrative nucleoside transporter family which plays a key role in nucleoside and nucleobase uptake for salvage pathways of nucleotide synthesis (1,2). SLC29A1 is a transmembrane glycoprotein that localizes to the plasma and mitochondrial membranes and mediates the cellular uptake of nucleosides from the surrounding medium (3). As a nucleoside transporter, SLC29A1 plays an important role in the uptake of nucleoside-based anti-cancer drugs; polymorphisms of point mutations in the gene encoding this protein may affect the efficacy of these drugs (4).
Synonyms:	ENT1

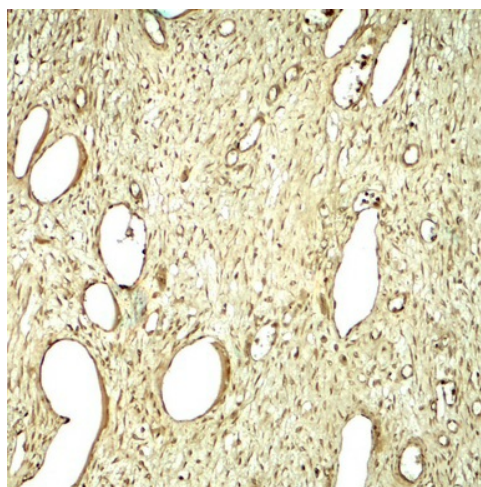


[View online »](#)

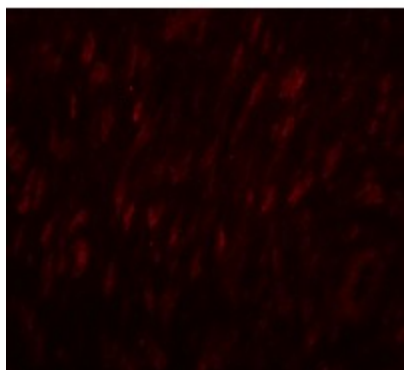
Product images:



Western blot analysis of SLC29A1 in human ovary tissue lysate with SLC29A1 antibody at (A) 1 and (B) 2 $\mu\text{g}/\text{mL}$.



Immunohistochemistry of SLC29A1 in human ovary tissue with SLC29A1 antibody at 5 $\mu\text{g}/\text{mL}$.



Immunofluorescence of SLC29A1 in human ovary tissue with SLC29A1 antibody at 20 $\mu\text{g}/\text{mL}$.