

## Product datasheet for **TA349149**

### ADRM1 Rabbit Polyclonal Antibody

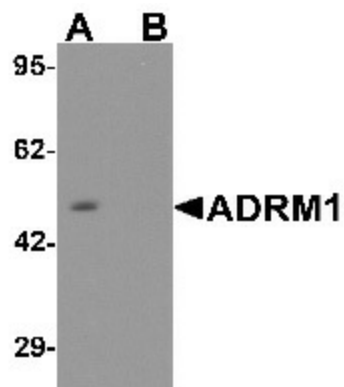
#### Product data:

Product Type:	Primary Antibodies
Applications:	IHC, WB
Recommended Dilution:	WB: 1 - 2 ug/mL, IHC: 5 ug/mL
Reactivity:	Human, Mouse, Rat
Host:	Rabbit
Isotype:	IgG
Clonality:	Polyclonal
Immunogen:	ADRM1 antibody was raised against a 19 amino acid peptide near the center of human ADRM1.
Formulation:	PBS containing 0.02% sodium azide.
Concentration:	1 mg/ml
Purification:	ADRM1 antibody is affinity chromatography purified via peptide column.
Conjugation:	Unconjugated
Storage:	Store at -20°C as received.
Stability:	Stable for 12 months from date of receipt.
Predicted Protein Size:	Predicted: 45 kDa; Observed: 48 kDa
Gene Name:	adhesion regulating molecule 1
Database Link:	<a href="#">NP_783163</a> <a href="#">Entrez Gene 11047 Human</a> <a href="#">Q16186</a>
Background:	The adhesion-regulating molecule 1 (ADRM1) is thought to be involved in protein recruitment and cell adhesion and functions as a proteasomal ubiquitin receptor (1). ADRM1 promotes the activity of UCH-L5 and plays a role in lymphocyte homing. The carboxy-terminal domain of mammalian ADRM1 serves to bind and enhance the isopeptidase activity of UCHL5/UCH37, perhaps serving as a mechanism to accelerate ubiquitin chain disassembly (2,3). ADRM1 expression is induced by IFN-gamma in some cancer cell lines and its expression is upregulated in other metastatic cells, suggesting a role in carcinogenesis (4,5).
Synonyms:	IMD12; MLT; MLT1

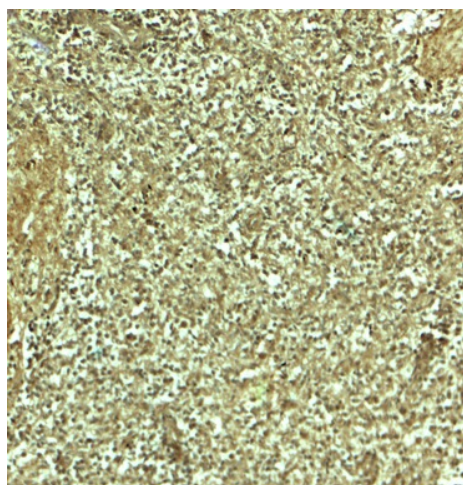


[View online »](#)

## Product images:



Western blot analysis of ADRM1 in EL cell lysate with ADRM1 antibody at 1 ug/mL in (A) the absence and (B) the presence of blocking peptide.



Immunohistochemistry of ADRM1 in human spleen tissue with ADRM1 antibody at 5 ug/mL.