

Product datasheet for **TA349144**

CTHRC1 Rabbit Polyclonal Antibody

Product data:

Product Type:	Primary Antibodies
Applications:	IF, IHC, WB
Recommended Dilution:	WB: 1 - 2 ug/mL, IHC: 5 ug/mL, IF: 20 ug/mL
Reactivity:	Human, Mouse, Rat
Host:	Rabbit
Isotype:	IgG
Clonality:	Polyclonal
Immunogen:	CTHRC1 antibody was raised against a 19 amino acid peptide near the amino terminus of human CTHRC1.
Formulation:	PBS containing 0.02% sodium azide.
Concentration:	1 mg/ml
Purification:	CTHRC1 antibody is affinity chromatography purified via peptide column.
Conjugation:	Unconjugated
Storage:	Store at -20°C as received.
Stability:	Stable for 12 months from date of receipt.
Predicted Protein Size:	Predicted: 27 kDa; Observed: 27 kDa
Gene Name:	collagen triple helix repeat containing 1
Database Link:	NP_612464 Entrez Gene 68588 Mouse Entrez Gene 282836 Rat Entrez Gene 115908 Human Q96CG8



[View online »](#)

Background:

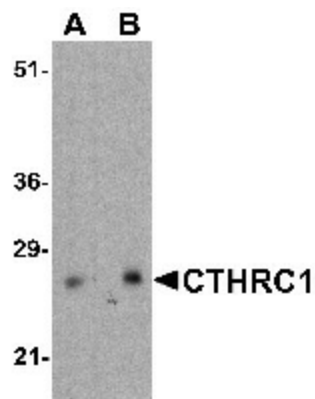
The Collagen triple helix repeat-containing protein (CTHRC1) is a glycosylated, secreted protein that is transiently expressed in the arterial wall in response to injury where it is thought to contribute to vascular remodeling by inhibiting collagen expression and deposition and promoting cell migration (1). CTHRC1 is highly expressed multiple human cancers, including pancreatic cancer where it plays a significant role in the progression and metastasis of the disease by regulating migration and adhesion of tumors cells (2). CTHRC1 overexpression can also be used as an independent prognostic marker in gastric cancer (3). Mutations at this locus have been associated with Barrett esophagus and esophageal adenocarcinoma (4).

Synonyms:

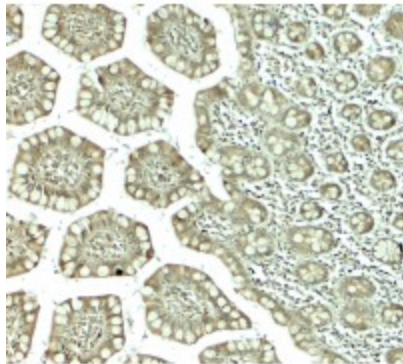
collagen triple helix repeat containing 1

Protein Families:

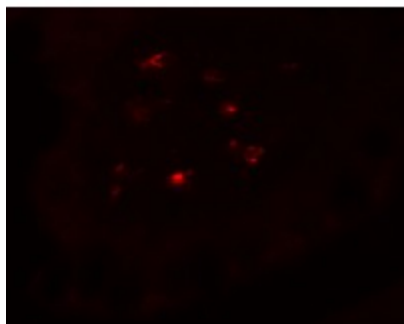
Secreted Protein

Product images:

Western blot analysis of CTHRC1 in rat small intestine tissue lysate with CTHRC1 antibody at (A) 1 and (B) 2 ug/mL.



Immunohistochemistry of CTHRC1 in human small intestine tissue with CTHRC1 antibody at 5 ug/mL.



Immunofluorescence of CTHRC1 in human small intestine tissue with CTHRC1 antibody at 20 ug/mL.