

Product datasheet for **TA349142**

MALT1 Rabbit Polyclonal Antibody

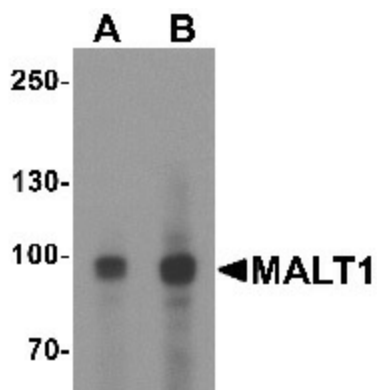
Product data:

Product Type:	Primary Antibodies
Applications:	IF, IHC, WB
Recommended Dilution:	WB: 1 - 2 ug/mL, IHC: 5 ug/mL, IF: 20 ug/mL
Reactivity:	Human, Mouse, Rat
Host:	Rabbit
Isotype:	IgG
Clonality:	Polyclonal
Immunogen:	MALT1 antibody was raised against an 18 amino acid peptide near the carboxy terminus of human MALT1.
Formulation:	PBS containing 0.02% sodium azide.
Concentration:	1 mg/ml
Purification:	MALT1 antibody is affinity chromatography purified via peptide column.
Conjugation:	Unconjugated
Storage:	Store at -20°C as received.
Stability:	Stable for 12 months from date of receipt.
Predicted Protein Size:	Predicted: 91 kDa; Observed: 96 kDa
Gene Name:	MALT1 paracaspase
Database Link:	NP_006776 Entrez Gene 10892 Human Q9UDY8
Background:	MALT1 was initially identified as a novel gene that was recurrently rearranged in t(11;18) (q21;q21) mucosa-associated lymphoid tissue lymphomas along with the apoptosis inhibitor protein c-IAP2 (1). MALT1, along with the proteins CARMA1 and Bcl10 form an NF-kappaB-activating complex, termed the CBM signalsome, that acts downstream of lymphocyte antigen receptors as well as many other non-lymphoid cell-surface receptors that play a role in multiple cellular functions (2,3). MALT1 has proteolytic activity, and this activity is critical for full NF-kappaB response in T cell activation (4).
Synonyms:	LEM6; PGC-1(alpha); PGC-1alpha; PGC-1v; PGC1; PGC1A; PPARGC1



[View online »](#)

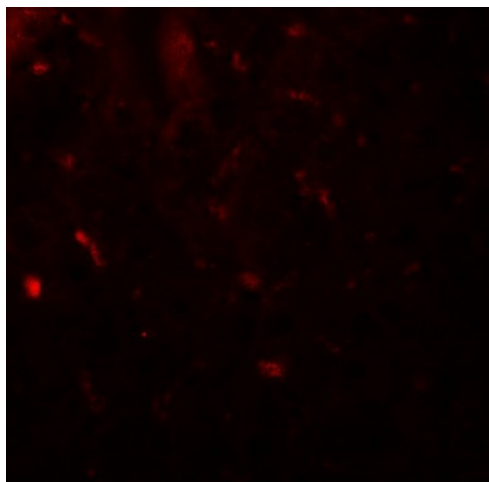
Product images:



Western blot analysis of MALT1 in EL4 cell lysate with MALT1 antibody at (A) 1 and (2) ug/mL.



Immunohistochemistry of MALT1 in human spleen tissue with MALT1 antibody at 5 ug/mL.



Immunofluorescence of MALT1 in human spleen tissue with MALT1 antibody at 20 ug/mL.