

Product datasheet for **TA349141**

PRRX1 Rabbit Polyclonal Antibody

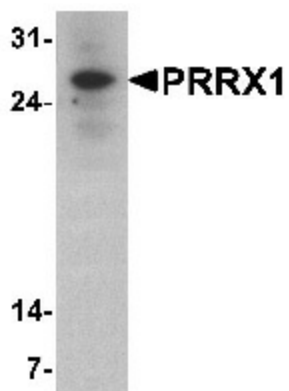
Product data:

Product Type:	Primary Antibodies
Applications:	WB
Recommended Dilution:	WB: 1 - 2 ug/mL
Reactivity:	Human, Mouse, Rat
Host:	Rabbit
Isotype:	IgG
Clonality:	Polyclonal
Immunogen:	PRRX1 antibody was raised against a 19 amino acid peptide near the center of human PRRX1.
Formulation:	PBS containing 0.02% sodium azide.
Concentration:	1 mg/ml
Purification:	PRRX1 antibody is affinity chromatography purified via peptide column.
Conjugation:	Unconjugated
Storage:	Store at -20°C as received.
Stability:	Stable for 12 months from date of receipt.
Predicted Protein Size:	Predicted: 27 kDa; Observed: 26 kDa
Gene Name:	paired related homeobox 1
Database Link:	NP_073207 Entrez Gene 5396 Human P54821
Background:	The paired related homeobox protein 1 (PRRX1) is a paired-type DNA-binding homeodomain that plays an important role as a key switch for neural cell lineage determination and is essential for development (1,2). PRRX1 is expressed in a number of undifferentiated mesenchymal cells in mouse embryos and adults (3). Mice with a disrupted PRRX1 gene show perinatal death with craniofacial and limb malformations (4). Low PRRX1 expression levels were significantly associated with metastasis and poor prognosis of breast and colorectal cancer (5).
Synonyms:	hVps34; VPS34; Vps34



[View online »](#)

Product images:



Western blot analysis of PRRX1 in HeLa cell lysate with PRRX1 antibody at 1 ug/mL.