

## Product datasheet for **TA349140**

### GLIS2 Rabbit Polyclonal Antibody

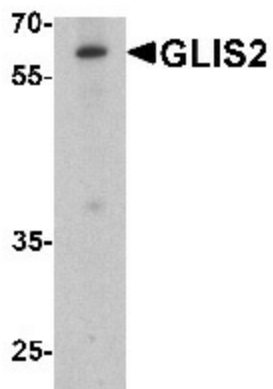
#### Product data:

Product Type:	Primary Antibodies
Applications:	IHC, WB
Recommended Dilution:	WB: 1 - 2 ug/mL, IHC: 5 ug/mL
Reactivity:	Human, Mouse, Rat
Host:	Rabbit
Isotype:	IgG
Clonality:	Polyclonal
Immunogen:	GLIS2 antibody was raised against an 18 amino acid peptide near the center of human GLIS2.
Formulation:	PBS containing 0.02% sodium azide.
Concentration:	1 mg/ml
Purification:	GLIS2 antibody is affinity chromatography purified via peptide column.
Conjugation:	Unconjugated
Storage:	Store at -20°C as received.
Stability:	Stable for 12 months from date of receipt.
Predicted Protein Size:	Predicted: 58 kDa; Observed: 60 kDa
Gene Name:	GLIS family zinc finger 2
Database Link:	<a href="#">NP_115964</a> <a href="#">Entrez Gene 84662 Human</a> <a href="#">Q9BZE0</a>
Background:	GLIS2, also known as neuronal Krueppel-like, is a 524 amino acid protein that belongs to the GLI C2H2-type zinc-finger protein family (1). GLIS2 can act either as a transcription repressor or as a transcription activator and may be involved in neuron differentiation (1,2). GLIS2 is expressed at high levels in kidney and at low levels in heart, lung and placenta. Mutations of GLIS2 have been suggested to be associated with development of progressive chronic kidney disease with characteristics resembling nephronophthisis (3,4).
Synonyms:	KIRRE; MRD4; NEPH2; PRO4502

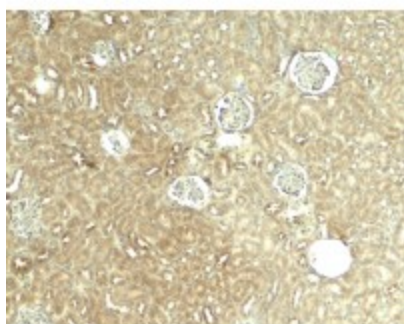


[View online »](#)

## Product images:



Western blot analysis of GLIS2 in K562 cell lysate with GLIS2 antibody at 1 ug/mL.



Immunohistochemistry of GLIS2 in mouse kidney tissue with GLIS2 antibody at 5 ug/mL.