

## Product datasheet for **TA349138**

### Myosin heavy chain 3 (MYH3) Rabbit Polyclonal Antibody

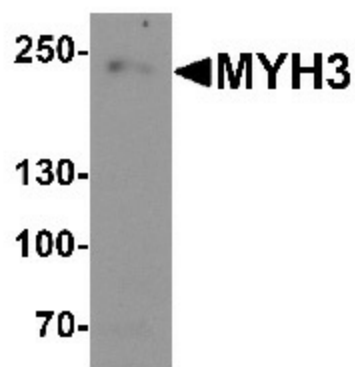
#### Product data:

Product Type:	Primary Antibodies
Applications:	IHC, WB
Recommended Dilution:	WB: 1 - 2 ug/mL, IHC: 5 ug/mL
Reactivity:	Human, Mouse, Rat
Host:	Rabbit
Isotype:	IgG
Clonality:	Polyclonal
Immunogen:	MYH3 antibody was raised against a 19 amino acid peptide near the amino terminus of human MYH3.
Formulation:	PBS containing 0.02% sodium azide.
Concentration:	1 mg/ml
Purification:	MYH3 antibody is affinity chromatography purified via peptide column.
Conjugation:	Unconjugated
Storage:	Store at -20°C as received.
Stability:	Stable for 12 months from date of receipt.
Predicted Protein Size:	Predicted: 213 kDa; Observed: 240 kDa
Gene Name:	myosin, heavy chain 3, skeletal muscle, embryonic
Database Link:	<a href="#">NP_002461</a> <a href="#">Entrez Gene 4621 Human P11055</a>
Background:	Myosins are actin-based motor proteins that function in the generation of mechanical force in eukaryotic cells (1). MYH3 (myosin, heavy chain, skeletal muscle, embryonic) plays a significant role in skeletal muscle development (2) and is also essential for the proper morphology and function of the developing heart (3). Mutations in this gene have been associated with Freeman-Sheldon syndrome and Sheldon-Hall syndrome (4).
Synonyms:	Myosin heavy chain 3, Myosin-3, Myosin heavy chain skeletal muscle embryonic, HEMHC, MYHC-EMB, MYHSE1, SMHCE

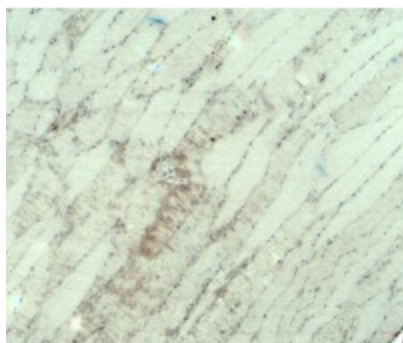


[View online »](#)

## Product images:



Western blot analysis of MYH3 in Jurkat cell lysate with MYH3 antibody at 1 ug/mL.



Immunohistochemistry of MYH3 in mouse skeletal muscle tissue with MYH3 antibody at 5 ug/mL.