

Product datasheet for **TA349136**

SLC1A7 Rabbit Polyclonal Antibody

Product data:

Product Type:	Primary Antibodies
Applications:	IF, IHC, WB
Recommended Dilution:	WB: 1 - 2 ug/mL, IHC: 5 ug/mL, IF: 20 ug/mL
Reactivity:	Human, Mouse
Host:	Rabbit
Isotype:	IgG
Clonality:	Polyclonal
Immunogen:	SLC1A7 antibody was raised against a 14 amino acid peptide near the carboxy terminus of human SLC1A7.
Formulation:	PBS containing 0.02% sodium azide.
Concentration:	1 mg/ml
Purification:	SLC1A7 antibody is affinity chromatography purified via peptide column.
Conjugation:	Unconjugated
Storage:	Store at -20°C as received.
Stability:	Stable for 12 months from date of receipt.
Predicted Protein Size:	Predicted: 17, 52, 62, 68 kDa; Observed: 52 kDa
Gene Name:	solute carrier family 1 member 7
Database Link:	NP_001274524 Entrez Gene 6512 Human O00341

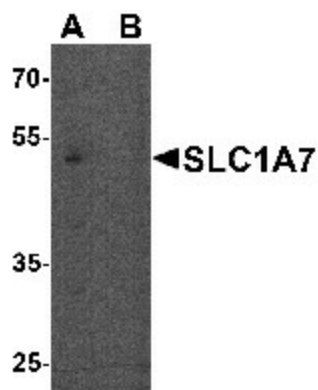
Background: The solute carrier family 1 member 7 (SLC1A7) protein was initially identified as a glutamate transporter coupled to a chloride conductance that is expressed primarily in the retina (1). More recent evidence indicates that it is widely expressed in peripheral tissues, also (2). Experiments have shown that SLC1A7 functions as a low-affinity/low-capacity glutamate transport, with an anion channel optimized for anion conductance in the negative voltage range (3). In the retina, SLC1A7 co-localizes with the serum and glucocorticoid dependent kinase SGK1, and its cell surface expression and activity is regulated SGK1 and its isoform SGK3 (4).



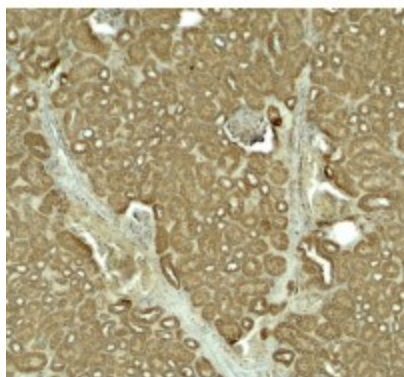
[View online »](#)

Synonyms: 170A; DDX13; HLP; SKI2; SKI2W; SKIV2; SKIV2L1; THES2

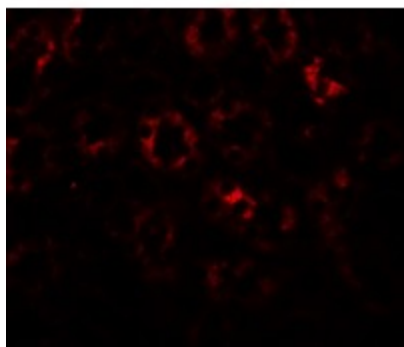
Product images:



Western blot analysis of SLC1A7 in C2C12 cell lysate with SLC1A7 antibody at 1 ug/mL in (A) the absence and (B) the presence of blocking peptide.



Immunohistochemistry of SLC1A7 in mouse kidney tissue with SLC1A7 antibody at 5 ug/mL.



Immunofluorescence of SLC1A7 in mouse kidney tissue with SLC1A7 antibody at 20 ug/mL.