

## Product datasheet for **TA349134**

### Tau (MAPT) Rabbit Polyclonal Antibody

#### Product data:

Product Type:	Primary Antibodies
Applications:	IHC
Recommended Dilution:	WB: 1 - 2 ug/mL, IHC: 5 ug/mL
Reactivity:	Human, Mouse, Rat
Host:	Rabbit
Isotype:	IgG
Clonality:	Polyclonal
Immunogen:	TAU antibody was raised against a 19 amino acid peptide near the amino terminus of human TAU.
Formulation:	PBS containing 0.02% sodium azide.
Concentration:	1 mg/ml
Purification:	TAU antibody is affinity chromatography purified via peptide column.
Conjugation:	Unconjugated
Storage:	Store at -20°C as received.
Stability:	Stable for 12 months from date of receipt.
Predicted Protein Size:	Predicted: 83 kDa; Observed: 90 kDa
Gene Name:	microtubule associated protein tau
Database Link:	<a href="#">NP_058519</a> <a href="#">Entrez Gene 4137 Human</a> <a href="#">P10636</a>



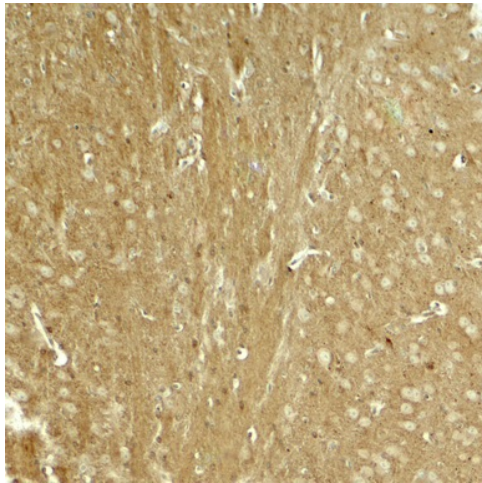
[View online »](#)

**Background:**

The microtubial-associated protein TAU (MAPT), more commonly known as TAU, is normally a highly soluble protein found predominantly in neurons (1), but accumulations of highly phosphorylated tau protein aggregates are observed in several neurodegenerative diseases including Alzheimer's disease, progressive supranuclear palsy, corticobasal degeneration, and frontotemporal lobar dementia. It was thought that these pathological tau aggregates were the toxic form of tau, but recent studies indicate that soluble and highly phosphorylated tau species are more closely associated with synaptic dysfunction and cell loss (2,3). Mutations in the TAU gene have also been associated with several of these neurodegenerative diseases (4).

**Synonyms:**

CT1.4; MAGE-41; MAGE-X2; MAGE4; MAGE4A; MAGE4B

**Product images:**

Immunohistochemistry of TAU in mouse brain tissue with TAU antibody at 5 ug/ml.