

## Product datasheet for **TA349133**

### ATG4D Rabbit Polyclonal Antibody

#### Product data:

Product Type:	Primary Antibodies
Applications:	IF, IHC, WB
Recommended Dilution:	WB: 1 - 2 ug/mL, IHC: 5 ug/mL, IF: 20 ug/mL
Reactivity:	Human, Mouse, Rat
Host:	Rabbit
Isotype:	IgG
Clonality:	Polyclonal
Immunogen:	ATG4D antibody was raised against a 17 amino acid peptide near the amino terminus of human ATG4D.
Formulation:	PBS containing 0.02% sodium azide.
Concentration:	1 mg/ml
Purification:	ATG4D antibody is affinity chromatography purified via peptide column.
Conjugation:	Unconjugated
Storage:	Store at -20°C as received.
Stability:	Stable for 12 months from date of receipt.
Predicted Protein Size:	Predicted: 52 kDa; Observed: 49 kDa
Gene Name:	autophagy related 4D cysteine peptidase
Database Link:	<a href="#">NP_116274</a> <a href="#">Entrez Gene 84971 Human</a> <a href="#">Q86TLO</a>

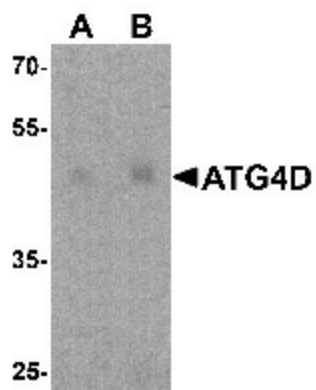
**Background:** Autophagy, the process of bulk degradation of cellular proteins through an autophagosomal-lysosomal pathway is important for normal growth control and may be defective in tumor cells. It is involved in the preservation of cellular nutrients under starvation conditions as well as the normal turnover of cytosolic components (1,2). ATG4D, also known as AURL4, is one of four mammalian orthologs of the yeast ATG4 protein; all four are cysteine proteases (3). ATG4 is required for ATG8 conjugation to phosphatidylethanolamine on autophagosomal membranes. In mammals, each ATG4 homolog shows a selective preference for the ATG8 homologs (4).



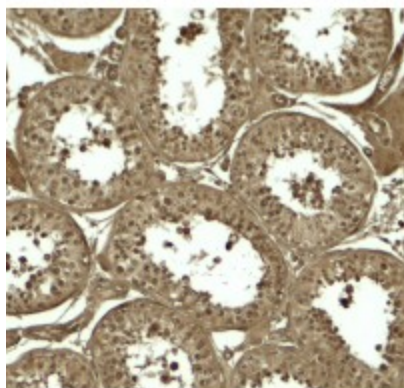
[View online »](#)

Synonyms: APG4-C; APG4C; AUTL1; AUTL3

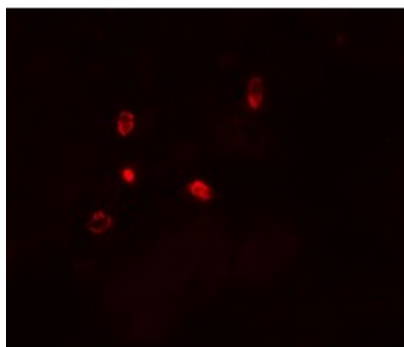
### Product images:



Western blot analysis of ATG4D in human testis tissue lysate with ATG4D antibody at (A) 1 and (B) 2 ug/mL.



Immunohistochemistry of ATG4D in human testis tissue with ATG4D antibody at 5 ug/mL.



Immunofluorescence of ATG4D in human testis tissue with ATG4D antibody at 20 ug/mL.