

Product datasheet for **TA349132**

ATG4B Rabbit Polyclonal Antibody

Product data:

Product Type:	Primary Antibodies
Applications:	IF, IHC, WB
Recommended Dilution:	WB: 1 - 2 ug/mL, IHC: 5 ug/mL, IF: 20 ug/mL
Reactivity:	Human, Mouse, Rat
Host:	Rabbit
Isotype:	IgG
Clonality:	Polyclonal
Immunogen:	ATG4B antibody was raised against a 17 amino acid peptide near the carboxy terminus of human ATG4B.
Formulation:	PBS containing 0.02% sodium azide.
Concentration:	1 mg/ml
Purification:	ATG4B antibody is affinity chromatography purified via peptide column.
Conjugation:	Unconjugated
Storage:	Store at -20°C as received.
Stability:	Stable for 12 months from date of receipt.
Predicted Protein Size:	Predicted: 43 kDa; Observed: 44 kDa
Gene Name:	autophagy related 4B cysteine peptidase
Database Link:	NP_037457 Entrez Gene 66615 Mouse Entrez Gene 316640 Rat Entrez Gene 23192 Human Q9Y4P1



[View online »](#)

Background:

Autophagy, the process of bulk degradation of cellular proteins through an autophagosomal-lysosomal pathway is important for normal growth control and may be defective in tumor cells. It is involved in the preservation of cellular nutrients under starvation conditions as well as the normal turnover of cytosolic components (1,2). ATG4B, also known as AURL1, is one of four mammalian orthologs of the yeast ATG4 protein; all four are cysteine proteases (3). ATG4 is required for ATG8 conjugation to phosphatidylethanolamine on autophagosomal membranes. In mammals, each ATG4 homolog shows a selective preference for the ATG8 homologs (4). ATG4B has been found to be a novel protective protein in inflammatory colitis (5).

Synonyms:

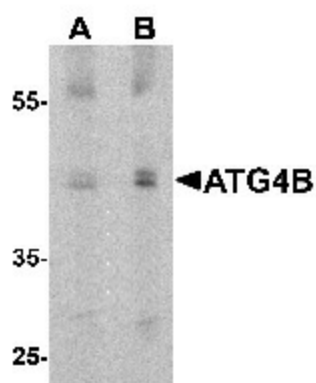
APG4B; AURL1

Protein Families:

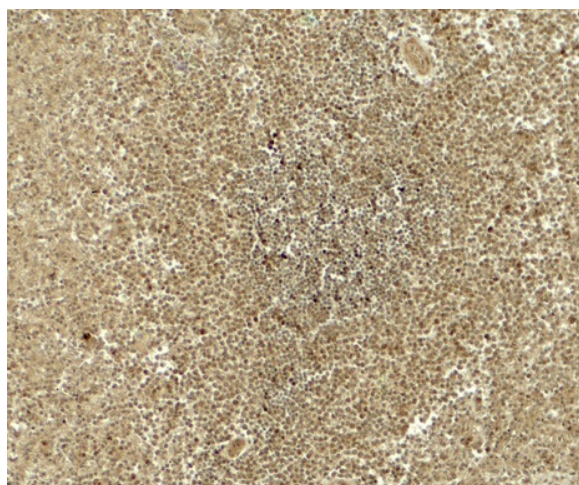
Protease

Protein Pathways:

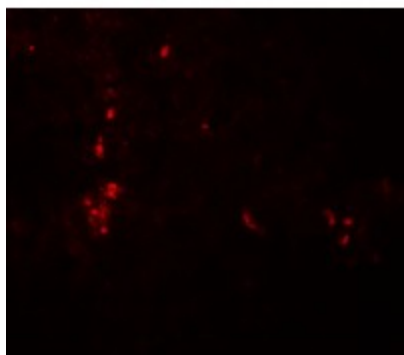
Regulation of autophagy

Product images:

Western blot analysis of ATG4B in 3T3 cell lysate with ATG4B antibody at 1 ug/mL.



Immunohistochemistry of ATG4B in human spleen tissue with ATG4B antibody at 5 ug/mL.



Immunofluorescence of ATG4B in human spleen tissue with ATG4B antibody at 20 ug/mL.