

Product datasheet for **TA349131**

ATG4A Rabbit Polyclonal Antibody

Product data:

Product Type:	Primary Antibodies
Applications:	IHC, WB
Recommended Dilution:	WB: 1 - 2 ug/mL, IHC: 5 ug/mL
Reactivity:	Human, Mouse, Rat
Host:	Rabbit
Isotype:	IgG
Clonality:	Polyclonal
Immunogen:	ATG4A antibody was raised against an 18 amino acid peptide near the carboxy terminus of human ATG4A.
Formulation:	PBS containing 0.02% sodium azide.
Concentration:	1 mg/ml
Purification:	ATG4A antibody is affinity chromatography purified via peptide column.
Conjugation:	Unconjugated
Storage:	Store at -20°C as received.
Stability:	Stable for 12 months from date of receipt.
Predicted Protein Size:	Predicted: 48 kDa; Observed: 44 kDa
Gene Name:	autophagy related 4A cysteine peptidase
Database Link:	NP_443168 Entrez Gene 666468 MouseEntrez Gene 678769 RatEntrez Gene 100910507 RatEntrez Gene 115201 Human Q8WYN0



[View online »](#)

Background:

Autophagy, the process of bulk degradation of cellular proteins through an autophagosomal-lysosomal pathway is important for normal growth control and may be defective in tumor cells. It is involved in the preservation of cellular nutrients under starvation conditions as well as the normal turnover of cytosolic components (1,2). ATG4A, also known as AURL2, is one of four mammalian orthologs of the yeast ATG4 protein; all four are cysteine proteases (3). ATG4 is required for ATG8 conjugation to phosphatidylethanolamine on autophagosomal membranes. In mammals, each ATG4 homolog shows a selective preference for the ATG8 homologs (4).

Synonyms:

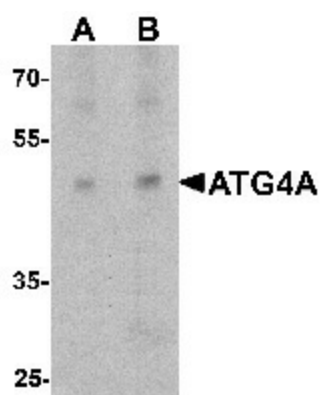
APG4A; AURL2

Protein Families:

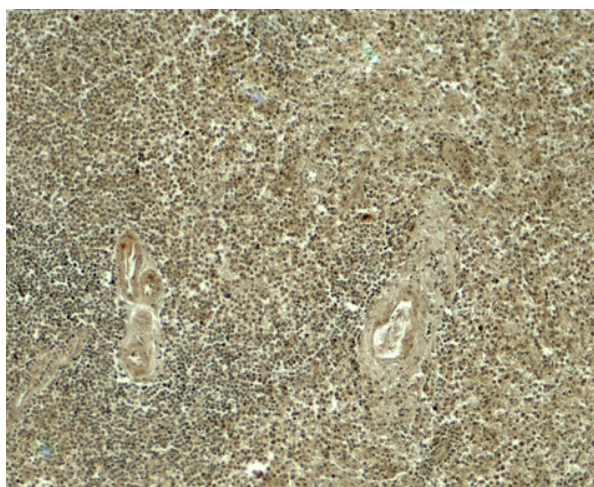
Protease

Protein Pathways:

Regulation of autophagy

Product images:

Western blot analysis of ATG4A in EL4 cell lysate with ATG4A antibody at (A) 1 and (B) 2 ug/mL.



Immunohistochemistry of ATG4A in human spleen tissue with ATG4A antibody at 5 ug/mL.