

## Product datasheet for **TA349128**

### Jagged1 (JAG1) Rabbit Polyclonal Antibody

#### Product data:

Product Type:	Primary Antibodies
Applications:	IF, IHC, WB
Recommended Dilution:	WB: 1 - 2 ug/mL, IHC: 5 ug/mL, IF: 20 ug/mL
Reactivity:	Human, Mouse, Rat
Host:	Rabbit
Isotype:	IgG
Clonality:	Polyclonal
Immunogen:	JAG1 antibody was raised against a 19 amino acid peptide near the carboxy terminus of human JAG1.
Formulation:	PBS containing 0.02% sodium azide.
Concentration:	1 mg/ml
Purification:	JAG1 antibody is affinity chromatography purified via peptide column.
Conjugation:	Unconjugated
Storage:	Store at -20°C as received.
Stability:	Stable for 12 months from date of receipt.
Predicted Protein Size:	Predicted: 134 kDa; Observed: 130 kDa
Gene Name:	jagged 1
Database Link:	<a href="#">NP_000205</a> <a href="#">Entrez Gene 16449 MouseEntrez Gene 29146 RatEntrez Gene 182 Human P78504</a>

**Background:** The LIN-12/Notch family of transmembrane receptors plays a central role in development by regulating cell fate decisions (1). Ligands for Notch include JAG1, JAG2 and Delta. JAG1 is one of the DSL (Delta, Serrate, Lag2) transmembrane proteins that can activate Notch. It is involved in mammalian cardiovascular development and in cell-fate decisions during hematopoiesis (1,2). JAG1 is widely expressed in adult and fetal tissues and the mutation of the JAG1 gene is associated with Familial Tetralogy of Fallot (3). JAG1 expression is associated with prostate cancer metastasis and is up-regulated in cervical squamous cell carcinoma (4,5).



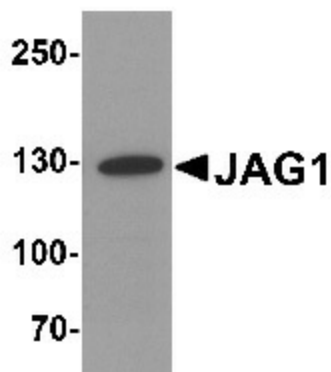
[View online »](#)

**Synonyms:** AGS; AHD; AWS; CD339; HJ1; JAGL1

**Protein Families:** Druggable Genome, ES Cell Differentiation/IPS, Transmembrane

**Protein Pathways:** Notch signaling pathway

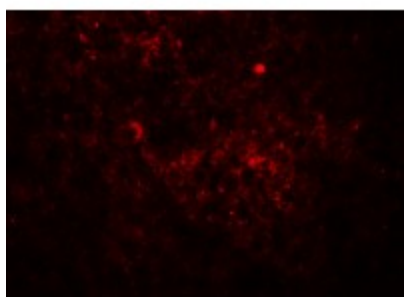
**Product images:**



Western blot analysis of JAG1 in HeLa cell lysate with JAG1 antibody at 1 ug/mL.



Immunohistochemistry of JAG1 in human spleen tissue with JAG1 antibody at 5 ug/mL.



Immunofluorescence of JAG1 in human spleen tissue with JAG1 antibody at 20 ug/mL.