

Product datasheet for **TA349126**

HES5 Rabbit Polyclonal Antibody

Product data:

Product Type:	Primary Antibodies
Applications:	IF, IHC, WB
Recommended Dilution:	WB: 1 - 2 ug/mL, IHC: 5 ug/mL, IF: 20 ug/mL
Reactivity:	Human, Mouse, Rat
Host:	Rabbit
Isotype:	IgG
Clonality:	Polyclonal
Immunogen:	HES5 antibody was raised against a 19 amino acid peptide near the amino terminus of human HES5.
Formulation:	PBS containing 0.02% sodium azide.
Concentration:	1 mg/ml
Purification:	HES5 antibody is affinity chromatography purified via peptide column.
Conjugation:	Unconjugated
Storage:	Store at -20°C as received.
Stability:	Stable for 12 months from date of receipt.
Predicted Protein Size:	Predicted: 18 kDa; Observed: 17 kDa
Gene Name:	hes family bHLH transcription factor 5
Database Link:	NP_001010926 Entrez Gene 15208 MouseEntrez Gene 79225 RatEntrez Gene 388585 Human Q5TA89
Background:	HES5 is a member of the HES family of transcriptional repressors, which are the mammalian homologs of the Drosophila Hairy and Enhancer of Split and contain basic Helix-loop-helix (bHLH) and Orange domains (1). The HES5 gene is a downstream target of the Notch signaling pathway and its expression is downregulated during human cartilage differentiation (2). HES5 can directly repress transcription of the E3 ligase FBW7-beta, creating a feedback loop that modulates Notch-mediated intestinal and neural stem cell fate decisions (3).
Synonyms:	bHLHb38

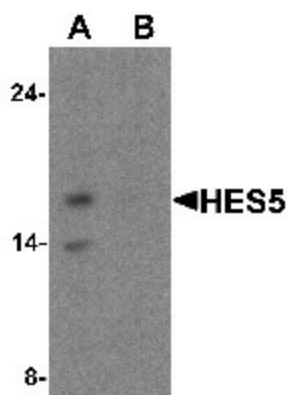


[View online »](#)

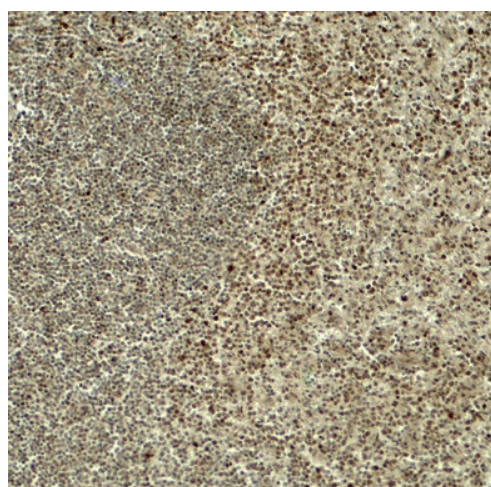
Protein Families: Druggable Genome, ES Cell Differentiation/IPS

Protein Pathways: Notch signaling pathway

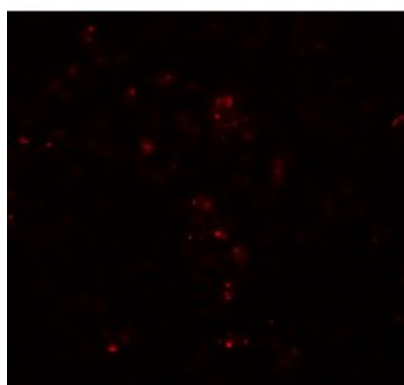
Product images:



Western blot analysis of HES5 in Raji cell lysate with HES5 antibody at 1 ug/mL (A) the absence and (B) the presence of blocking peptide.



Immunohistochemistry of HES5 in human spleen tissue with HES5 antibody at 5 ug/mL.



Immunofluorescence of HES5 in human spleen tissue with HES5 antibody at 20 ug/mL.