

Product datasheet for **TA349123**

PPM1D Rabbit Polyclonal Antibody

Product data:

Product Type:	Primary Antibodies
Applications:	IF, IHC, WB
Recommended Dilution:	WB: 1 - 2 ug/mL, IHC: 5 ug/mL, IF: 20 ug/mL
Reactivity:	Human, Mouse, Rat
Host:	Rabbit
Isotype:	IgG
Clonality:	Polyclonal
Immunogen:	PPM1D antibody was raised against an 18 amino acid peptide near the carboxy terminus of human PPM1D.
Formulation:	PBS containing 0.02% sodium azide.
Concentration:	1 mg/ml
Purification:	PPM1D antibody is affinity chromatography purified via peptide column.
Conjugation:	Unconjugated
Storage:	Store at -20°C as received.
Stability:	Stable for 12 months from date of receipt.
Predicted Protein Size:	Predicted: 67 kDa; Observed: 68 kDa
Gene Name:	protein phosphatase, Mg ²⁺ /Mn ²⁺ dependent 1D
Database Link:	NP_003611 Entrez Gene 8493 Human Q14497

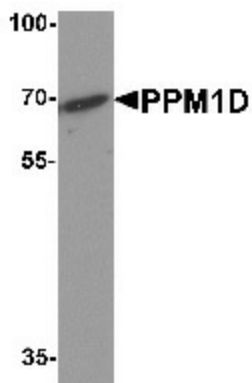
Background: Wild-type p53 induced phosphatase 1 (WIP1) / protein phosphatase magnesium-dependent 1 delta (PPM1D), a protein identified in the p53 DNA response pathway, is a member of the PP2C family of serine/threonine protein phosphatases which selectively inactivates p38 MAPK and dephosphorylates the ATM/ATR targets, Chk1 and p53 (1,2). Studies have shown that it is overexpressed in human cancers and is involved in the regulation of multiple DNA damage signaling pathways (2,3). PPM1D deletion results in a reduction of T and B cell function and compromised cell division, rendering cells resistant to becoming cancerous and slowing tumor development (4,5).



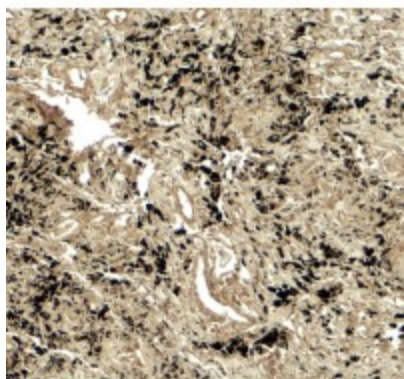
[View online »](#)

Synonyms: B120; BAF250; BAF250a; BM029; C1orf4; ELD; hELD; hOSA1; MRD14; OSA1; P270; SMARCF1

Product images:



Western blot analysis of PPM1D in 3T3 cell lysate with PPM1D antibody at 1 ug/mL.



Immunohistochemistry of PPM1D in human lung carcinoma tissue with PPM1D antibody at 5 ug/mL.



Immunofluorescence of PPM1D in human lung carcinoma tissue with PPM1D antibody at 20 ug/mL.