

Product datasheet for **TA349122**

KLF17 Rabbit Polyclonal Antibody

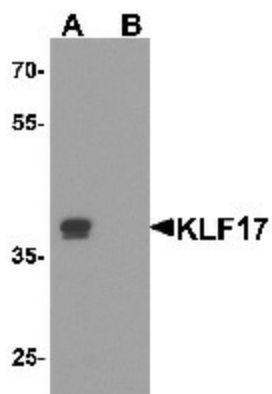
Product data:

Product Type:	Primary Antibodies
Applications:	IHC, WB
Recommended Dilution:	WB: 1 - 2 ug/mL, IHC: 5 ug/mL
Reactivity:	Human, Mouse, Rat
Host:	Rabbit
Isotype:	IgG
Clonality:	Polyclonal
Immunogen:	KLF17 antibody was raised against a 17 amino acid peptide near the carboxy terminus of human KLF17.
Formulation:	PBS containing 0.02% sodium azide.
Concentration:	1 mg/ml
Purification:	KLF17 antibody is affinity chromatography purified via peptide column.
Conjugation:	Unconjugated
Storage:	Store at -20°C as received.
Stability:	Stable for 12 months from date of receipt.
Predicted Protein Size:	Predicted: 28, 39, 43 kDa; Observed: 38 kDa
Gene Name:	Kruppel-like factor 17
Database Link:	NP_775755 Entrez Gene 128209 Human Q5JT82
Background:	KLF17, also known as ZNF393, is a member of the Sp/KLF family of transcription factors (1,2). KLF17 binds to the promoter and negatively regulates the transcription of Id-1, a key metastasis regulator in breast cancer (3). Suppression of KLF17 promotes breast cancer cell invasion and epithelial-mesenchymal transition (3). Down-regulated KLF17 expression is also associated tumor invasion and poor prognosis in hepatocellular carcinoma, suggesting that the level of KLF17 expression can serve as a prognostic indicator (4).
Synonyms:	H3; insl7; RXN3; ZINS4

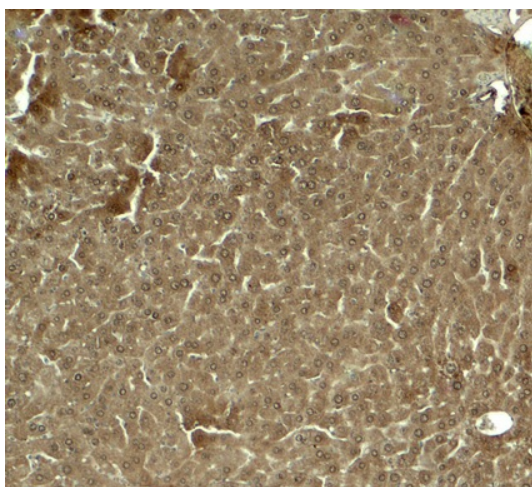


[View online »](#)

Product images:



Western blot analysis of KLF17 in rat liver tissue lysate with KLF17 antibody at 1 ug/mL in (A) the absence and (B) the presence of blocking peptide.



Immunohistochemistry of KLF17 in mouse liver tissue with KLF17 antibody at 5 ug/mL.