

Product datasheet for **TA349121**

NOSTRIN Rabbit Polyclonal Antibody

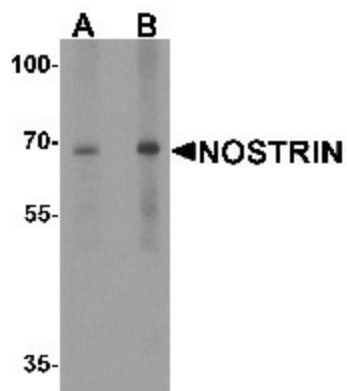
Product data:

Product Type:	Primary Antibodies
Applications:	IF, IHC, WB
Recommended Dilution:	WB: 1 - 2 ug/mL, IHC: 5 ug/mL, IF: 20 ug/mL
Reactivity:	Human, Mouse, Rat
Host:	Rabbit
Isotype:	IgG
Clonality:	Polyclonal
Immunogen:	NOSTRIN antibody was raised against a 17 amino acid peptide near the carboxy terminus of human NOSTRIN.
Formulation:	PBS containing 0.02% sodium azide.
Concentration:	1 mg/ml
Purification:	NOSTRIN antibody is affinity chromatography purified via peptide column.
Conjugation:	Unconjugated
Storage:	Store at -20°C as received.
Stability:	Stable for 12 months from date of receipt.
Predicted Protein Size:	Predicted: 47, 53, 56, 62 kDa; Observed: 68 kDa
Gene Name:	nitric oxide synthase trafficking
Database Link:	NP_443178 Entrez Gene 115677 Human Q8IV19
Background:	NOSTRIN, also known as endothelial nitric oxide synthase traffic inducer, is a member of the Pombe Cdc15 homology (PCH) family of proteins which may function as the modulator of the subcellular localisation and activity of endothelial nitric oxide synthase (eNOS) (1,2). It decreases NOS3 activity by inducing its translocation away from the plasma membrane (3). NOSTRIN typically exists as a trimer and is expressed in the vascular endothelial cells of highly vascularized tissues such as placenta, lung, kidney and heart. NOSTRIN is necessary for proper vascular development in zebrafish and postnatal retinal angiogenesis in mice (4,5).
Synonyms:	APG4A; AUTL2

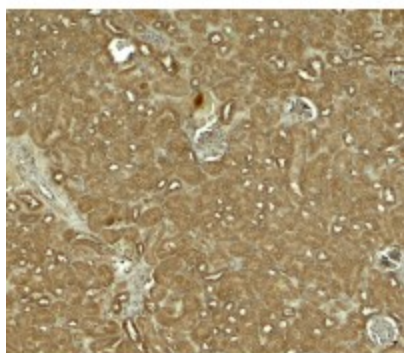


[View online »](#)

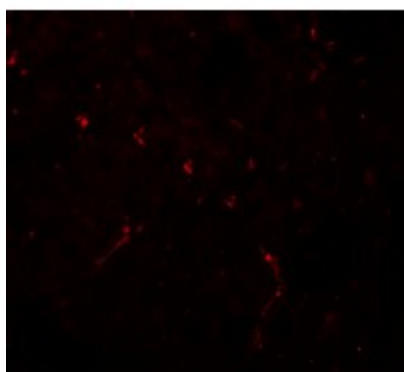
Product images:



Western blot analysis of NOSTRIN in SW480 cell lysate with NOSTRIN antibody at (A) 1 and (B) 2 ug/mL.



Immunohistochemistry of NOSTRIN in mouse kidney tissue with NOSTRIN antibody at 5 ug/mL.



Immunofluorescence of NOSTRIN in mouse kidney tissue with NOSTRIN antibody at 20 ug/mL.