

Product datasheet for **TA349120**

GJB2 Rabbit Polyclonal Antibody

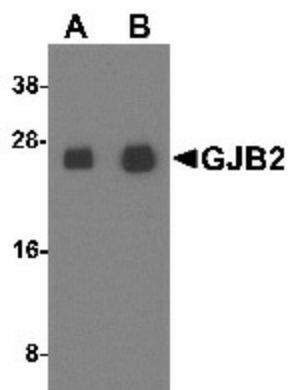
Product data:

Product Type:	Primary Antibodies
Applications:	WB
Recommended Dilution:	WB: 1 - 2 ug/mL
Reactivity:	Human
Host:	Rabbit
Isotype:	IgG
Clonality:	Polyclonal
Immunogen:	GJB2 antibody was raised against a 16 amino acid peptide near the center of human GJB2.
Formulation:	PBS containing 0.02% sodium azide.
Concentration:	1 mg/ml
Purification:	GJB2 antibody is affinity chromatography purified via peptide column.
Conjugation:	Unconjugated
Storage:	Store at -20°C as received.
Stability:	Stable for 12 months from date of receipt.
Predicted Protein Size:	Predicted: 25 kDa; Observed: 26 kDa
Gene Name:	gap junction protein beta 2
Database Link:	NP_003995 Entrez Gene 2706 Human P29033
Background:	The Gap junction beta-2 protein (GJB2), also known as Connexin 26, is member of the gap junction protein family which form structures that were shown to consist of cell-to-cell channels that facilitate the transfer of ions and small molecules between cells (1). Mutations in the GJB2 gene are thought to be responsible for as much as 35-45% of congenital sensorineural hearing loss in some populations (2). Other mutations in this gene have also been linked to a wide array of skin diseases (3).
Synonyms:	CX26; DFNA3; DFNA3A; DFNB1; DFNB1A; HID; KID; NSRD1; PPK
Protein Families:	Druggable Genome, Ion Channels: Other, Transmembrane



[View online »](#)

Product images:



Western blot analysis of GJB2 in human colon tissue lysate with GJB2 antibody at (A) 1 and (B) 2 ug/mL.