

## Product datasheet for **TA349113**

### IQSEC2 Rabbit Polyclonal Antibody

#### Product data:

Product Type:	Primary Antibodies
Applications:	IHC, WB
Recommended Dilution:	WB: 1 - 2 ug/mL, IHC: 5 ug/mL
Reactivity:	Human, Mouse, Rat
Host:	Rabbit
Isotype:	IgG
Clonality:	Polyclonal
Immunogen:	IQSEC2 antibody was raised against an 18 amino acid peptide near the carboxy terminus of human IQSEC2.
Formulation:	PBS containing 0.02% sodium azide.
Concentration:	1 mg/ml
Purification:	IQSEC2 antibody is affinity chromatography purified via peptide column.
Conjugation:	Unconjugated
Storage:	Store at -20°C as received.
Stability:	Stable for 12 months from date of receipt.
Predicted Protein Size:	Predicted: 104, 133, 141, 164 kDa; Observed: 140 kD
Gene Name:	IQ motif and Sec7 domain 2
Database Link:	<a href="#">NP_001104595</a> <a href="#">Entrez Gene 245666</a> <a href="#">MouseEntrez Gene 685244</a> <a href="#">RatEntrez Gene 23096</a> <a href="#">Human Q5JU85</a>

**Background:** ADP ribosylation factors (Arfs) are small GTP-binding proteins known for their role in vesicular transport, where they nucleate the assembly of coat protein complexes at sites of carrier vesicle formation. Similar to the related protein IQSEC1, IQSEC2 is a guanine nucleotide exchange protein for ARF1 and ARF6 that belongs to the BRAG family and contains one IQ domain, one PH domain and one SEC7 domain (1,2). IQSEC2 is a major component of the postsynaptic density (PSD) and colocalizes with PSD-95. It has been suggested to modulate the functions of the ARF proteins (1). Mutations in this gene have been implicated in nonsyndromic X-linked mental retardation (3).

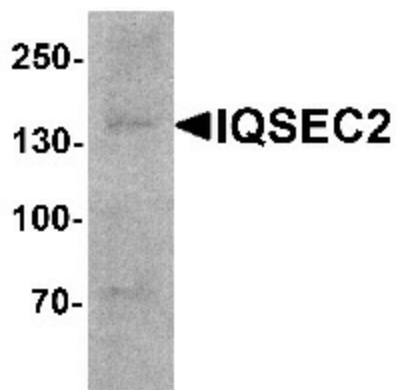


[View online »](#)

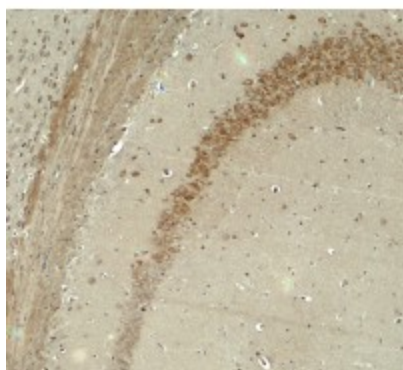
Synonyms: BRAG1; MRX1

Protein Pathways: Endocytosis

### Product images:



Western blot analysis of IQSEC2 in SK-N-SH cell lysate with IQSEC2 antibody at 1 ug/mL.



Immunohistochemistry of IQSEC2 in mouse brain tissue with IQSEC2 antibody at 5 ug/mL.