

Product datasheet for **TA349112**

IQSEC1 Rabbit Polyclonal Antibody

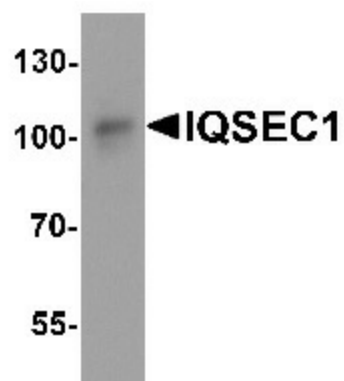
Product data:

Product Type:	Primary Antibodies
Applications:	WB
Recommended Dilution:	WB: 1 - 2 ug/mL
Reactivity:	Human, Mouse, Rat
Host:	Rabbit
Isotype:	IgG
Clonality:	Polyclonal
Immunogen:	IQSEC1 antibody was raised against a 19 amino acid peptide near the amino terminus of human IQSEC1
Formulation:	PBS containing 0.02% sodium azide.
Concentration:	1 mg/ml
Purification:	IQSEC1 antibody is affinity chromatography purified via peptide column.
Conjugation:	Unconjugated
Storage:	Store at -20°C as received.
Stability:	Stable for 12 months from date of receipt.
Predicted Protein Size:	Predicted: 106 kDa; Observed: 103 kDa
Gene Name:	IQ motif and Sec7 domain 1
Database Link:	NP_055684 Entrez Gene 9922 Human Q6DN90
Background:	ADP ribosylation factors (Arfs) are small GTP-binding proteins known for their role in vesicular transport, where they nucleate the assembly of coat protein complexes at sites of carrier vesicle formation. IQSEC1 (GEP100/BRAG2), a guanine nucleotide exchange protein for ARF6, belongs to the BRAG family and contains one IQ domain, one PH domain and one SEC7 domain (1). As a known activator of ARF6, IQSEC1 regulates cell surface levels of Beta1 integrin and its knockdown blocked tumour metastasis (2,3). IQSEC1 links EGFR signaling to ARF6 activation and may contribute to the cancer metastasis and malignancy (4).
Synonyms:	NICE-4; NICE4



[View online »](#)

Product images:



Western blot analysis of IQSEC1 in A20 cell lysate with IQSEC1 antibody at 1 ug/mL.