

## Product datasheet for **TA349111**

### Helicase SKI2W (SKIV2L) Rabbit Polyclonal Antibody

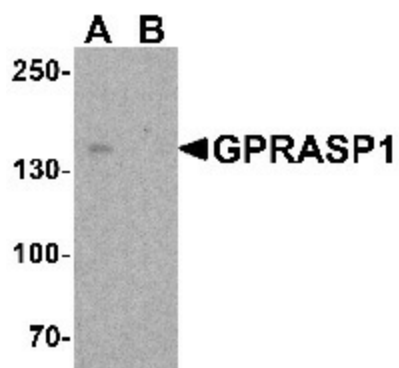
#### Product data:

Product Type:	Primary Antibodies
Applications:	IF, IHC, WB
Recommended Dilution:	WB: 1 - 2 ug/mL, IHC: 5 ug/mL, IF: 20 ug/mL
Reactivity:	Human, Mouse
Host:	Rabbit
Isotype:	IgG
Clonality:	Polyclonal
Immunogen:	GPRASP1 antibody was raised against a 15 amino acid peptide near the amino terminus of human GPRASP1.
Formulation:	PBS containing 0.02% sodium azide.
Concentration:	1 mg/ml
Purification:	GPRASP1 antibody is affinity chromatography purified via peptide column.
Conjugation:	Unconjugated
Storage:	Store at -20°C as received.
Stability:	Stable for 12 months from date of receipt.
Predicted Protein Size:	Predicted: 153 kDa; Observed: 150 kDa
Gene Name:	Ski2 like RNA helicase
Database Link:	<a href="#">NP_008860</a> <a href="#">Entrez Gene 6499 Human</a> <a href="#">Q15477</a>
Background:	The G protein-coupled receptor associated sorting protein 1 (GPRASP1) is a member of the GPRASP family and is thought to modulate lysosomal sorting and functional down-regulation of a variety of G-protein coupled receptors (1,2). GPRASP1 interacts with receptors such as the D2 dopamine receptor (DRD2), delta opioid receptor (OPRD1), beta-2 adrenergic receptor (ADRB2), D4 dopamine receptor (DRD4) and cannabinoid 1 receptor (CNR1) and targets these proteins for degradation in lysosomes (2). Recently, it has been shown that increased GPRASP1 levels may act as a potential biomarker for breast cancer (3).
Synonyms:	RUBICON; SCAR15

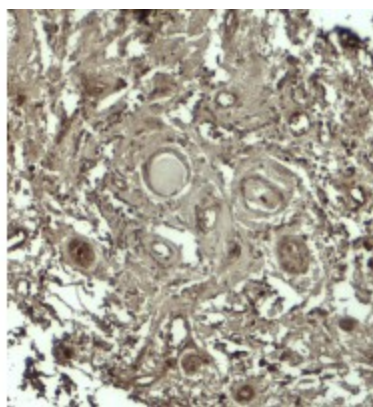


[View online »](#)

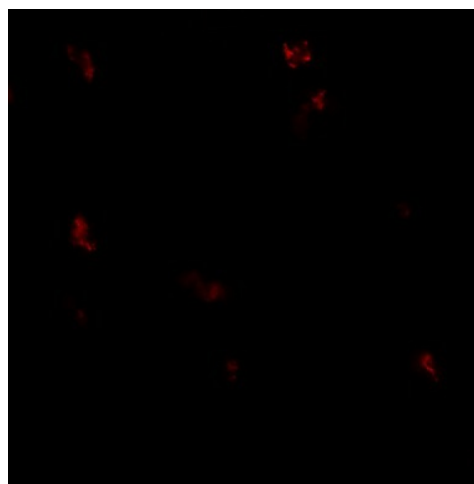
## Product images:



Western blot analysis of GPRASP1 in A-20 cell lysate with GPRASP1 antibody at 1 ug/mL in (A) the absence and (B) the presence of blocking peptide.



Immunohistochemistry of GPRASP1 in human breast carcinoma tissue with GPRASP12 antibody at 5 ug/mL.



Immunofluorescence of GPRASP1 in human breast carcinoma tissue with GPRASP1 antibody at 20 ug/mL.