

## Product datasheet for **TA349108**

### GPRASP1 Rabbit Polyclonal Antibody

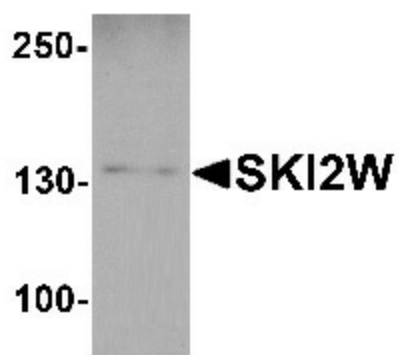
#### Product data:

Product Type:	Primary Antibodies
Applications:	IF, IHC, WB
Recommended Dilution:	WB: 1 - 2 ug/mL, IHC: 5 ug/mL, IF: 20 ug/mL
Reactivity:	Human, Mouse, Rat
Host:	Rabbit
Isotype:	IgG
Clonality:	Polyclonal
Immunogen:	SKI2W antibody was raised against a 16 amino acid peptide near the amino terminus of human SKI2W.
Formulation:	PBS containing 0.02% sodium azide.
Concentration:	1 mg/ml
Purification:	SKI2W antibody is affinity chromatography purified via peptide column.
Conjugation:	Unconjugated
Storage:	Store at -20°C as received.
Stability:	Stable for 12 months from date of receipt.
Predicted Protein Size:	Predicted: 113, 137 kDa; Observed: 135 kDa
Gene Name:	G protein-coupled receptor associated sorting protein 1
Database Link:	<a href="#">NP_001171656</a> <a href="#">Entrez Gene 9737 Human</a> <a href="#">Q5JY77</a>
Background:	SKI2W (SKIV2L, Helicase-like protein), a DEVH-box protein, is a component of the SKI complex which is involved in the regulation of translation and RNA turnover (1,2). SKI2W is a nucleolar and cytoplasmic protein that has a putative RNA helicase domain (2). The potential roles of Ski2W on the clearance of degraded nuclear and cytoplasmic RNA raised their possibilities as susceptibility genes of systemic lupus erythematosus (3,4).
Synonyms:	ABP; SBP; TEBG

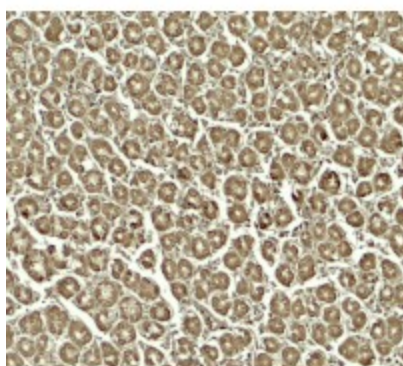


[View online »](#)

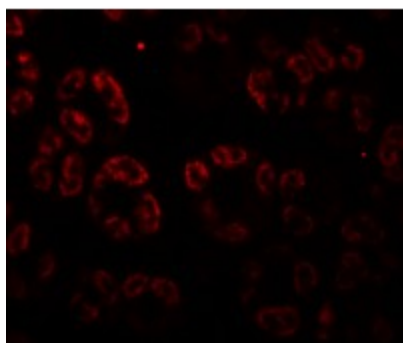
## Product images:



Western blot analysis of SKI2W in mouse stomach tissue lysate with SKI2W antibody at 1 ug/mL.



Immunohistochemistry of SKI2W in human stomach tissue with SKI2W antibody at 5 ug/mL.



Immunofluorescence of SKI2W in human stomach tissue with SKI2W antibody at 20 ug/mL.