

Product datasheet for **TA349106**

RHOG Rabbit Polyclonal Antibody

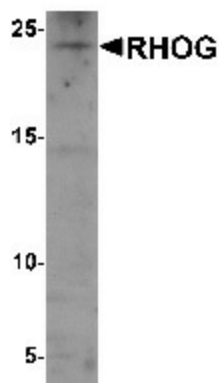
Product data:

Product Type:	Primary Antibodies
Applications:	IHC, WB
Recommended Dilution:	WB: 1 - 2 ug/mL, IHC: 5 ug/mL
Reactivity:	Human, Mouse, Rat
Host:	Rabbit
Isotype:	IgG
Clonality:	Polyclonal
Immunogen:	RHOG antibody was raised against a 15 amino acid peptide near the amino terminus of human RHOG.
Formulation:	PBS containing 0.02% sodium azide.
Concentration:	1 mg/ml
Purification:	RHOG antibody is affinity chromatography purified via peptide column.
Conjugation:	Unconjugated
Storage:	Store at -20°C as received.
Stability:	Stable for 12 months from date of receipt.
Predicted Protein Size:	Predicted: 21 kDa; Observed: 23 kDa
Gene Name:	ras homolog family member G
Database Link:	NP_001656 Entrez Gene 56212 MouseEntrez Gene 308875 RatEntrez Gene 391 Human P84095
Background:	The ras homolog family member G (RHOG), also known as rho-related GTP-binding protein, is a member of the Rho family of small GTPases, which cycle between inactive GDP-bound and active GTP-bound states and function as molecular switches in signal transduction cascades (1). RHOG controls a pathway that requires the microtubule network and activates Rac1 and Cdc42Hs independently of their growth factor signaling pathway (2). RHOG is also involved in the transcriptional regulation of interferon-gamma and nuclear factor of activated T cells (NFAT) and the regulation of the actin skeleton in lymphocytes (3).
Synonyms:	ARHG

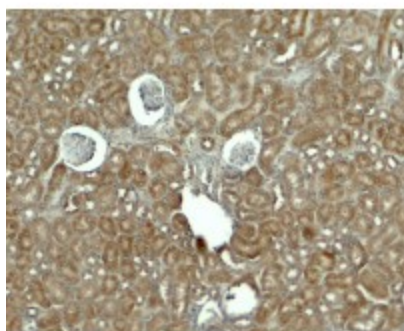


[View online »](#)

Product images:



Western blot analysis of RHOG in human kidney tissue lysate with RHOG antibody at 1 ug/mL.



Immunohistochemistry of RHOG in mouse kidney tissue with RHOG antibody at 5 ug/mL.