

Product datasheet for **TA349103**

KIRREL 3 (KIRREL3) Rabbit Polyclonal Antibody

Product data:

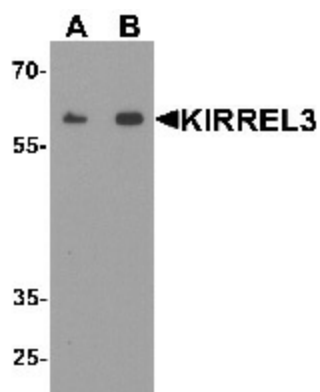
Product Type:	Primary Antibodies
Applications:	IF, IHC, WB
Recommended Dilution:	WB: 1 - 2 ug/mL, IHC: 5 ug/mL, IF: 20 ug/mL
Reactivity:	Human, Mouse, Rat
Host:	Rabbit
Isotype:	IgG
Clonality:	Polyclonal
Immunogen:	KIRREL3 antibody was raised against a 19 amino acid peptide near the amino terminus of human KIRREL3.
Formulation:	PBS containing 0.02% sodium azide.
Concentration:	1 mg/ml
Purification:	KIRREL3 antibody is affinity chromatography purified via peptide column.
Conjugation:	Unconjugated
Storage:	Store at -20°C as received.
Stability:	Stable for 12 months from date of receipt.
Predicted Protein Size:	Predicted: 64, 84 kDa; Observed: 60 kDa
Gene Name:	kin of IRRE like 3 (Drosophila)
Database Link:	NP_115920 Entrez Gene 67703 Mouse Entrez Gene 315546 Rat Entrez Gene 84623 Human Q8IZU9
Background:	KIRREL3, also known as nephrin-like protein 2, is a type I transmembrane protein belonging to a family of three podocin interacting proteins and the immunoglobulin superfamily (1). KIRREL3 is involved in the regulation of both glomerular and neural development (2), and more specifically, the nucleogenesis of the pontine nuclei in the developing hindbrain (3). KIRREL3 has also been shown to interact with the synaptic scaffold protein calmodulin-associated serine/threonine kinase (CASK) in neuronal cells (4).
Synonyms:	KIRRE; MRD4; NEPH2; PRO4502



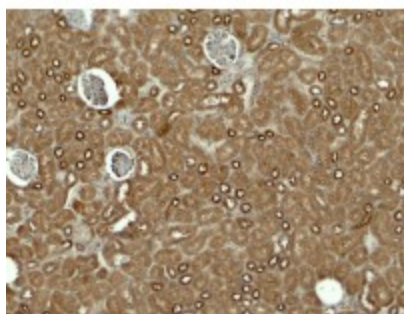
[View online »](#)

Protein Families: Transmembrane

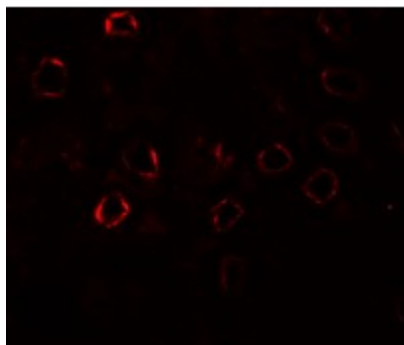
Product images:



Western blot analysis of KIRREL3 in mouse kidney tissue lysate with KIRREL3 antibody at (A) 1 and (B) 2 ug/mL.



Immunohistochemistry of KIRREL3 in mouse kidney tissue with KIRREL3 antibody at 5 ug/mL.



Immunofluorescence of KIRREL3 in mouse kidney tissue with KIRREL3 antibody at 20 ug/mL.