

Product datasheet for **TA349102**

KIRREL2 Rabbit Polyclonal Antibody

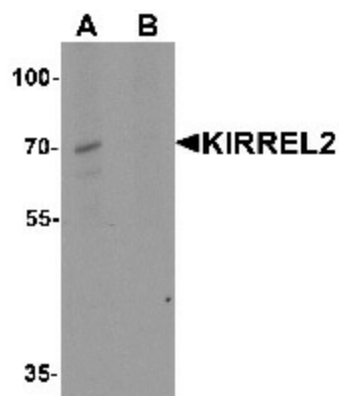
Product data:

Product Type:	Primary Antibodies
Applications:	IF, IHC, WB
Recommended Dilution:	WB: 1 - 2 ug/mL, IHC: 5 ug/mL, IF: 20 ug/mL
Reactivity:	Human, Mouse, Rat
Host:	Rabbit
Isotype:	IgG
Clonality:	Polyclonal
Immunogen:	KIRREL2 antibody was raised against a 17 amino acid peptide near the carboxy terminus of human KIRREL2.
Formulation:	PBS containing 0.02% sodium azide.
Concentration:	1 mg/ml
Purification:	KIRREL2 antibody is affinity chromatography purified via peptide column.
Conjugation:	Unconjugated
Storage:	Store at -20°C as received.
Stability:	Stable for 12 months from date of receipt.
Predicted Protein Size:	Predicted: 64, 70, 78 kDa; Observed: 70 kDa
Gene Name:	kin of IRRE like 2 (Drosophila)
Database Link:	NP_954649 Entrez Gene 84063 Human Q6UWL6
Background:	KIRREL2, also known as nephrin-like 3, is a type I transmembrane protein belonging to the immunoglobulin superfamily of cell adhesion molecules (1). KIRREL2 consists of five extracellular Ig-like repeats, a transmembrane domain, several glycosylation sites and a cytoplasmic domain that has a stretch of nine conserved residues (1,2). KIRREL2 has been found to be expressed in beta cells of pancreatic islets and is involved in the regulation of both glomerular and neural development (3,4). Downregulation of KIRREL2 is implicated in several proteinuric diseases (4,5).
Synonyms:	HI95; SES2; SEST2

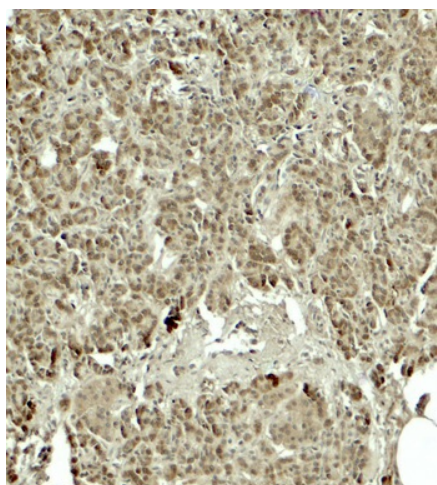


[View online »](#)

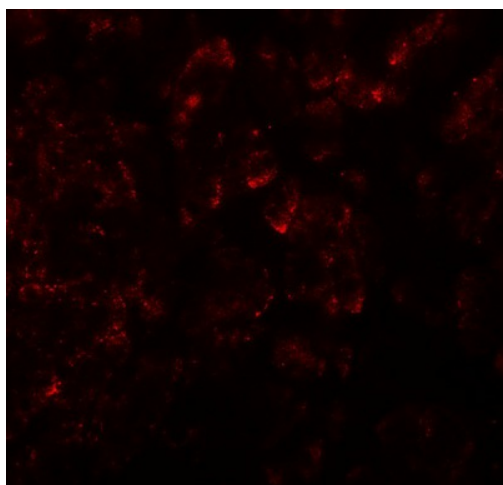
Product images:



Western blot analysis of KIRREL2 in 293 cell lysate with KIRREL2 antibody at 1 ug/mL in (A) the absence and (B) the presence of blocking peptide.



Immunohistochemistry of KIRREL2 in human pancreas tissue with KIRREL2 antibody at 5 ug/mL.



Immunofluorescence of KIRREL2 in human pancreas tissue with KIRREL2 antibody at 20 ug/mL.