

Product datasheet for **TA349099**

XKR8 Rabbit Polyclonal Antibody

Product data:

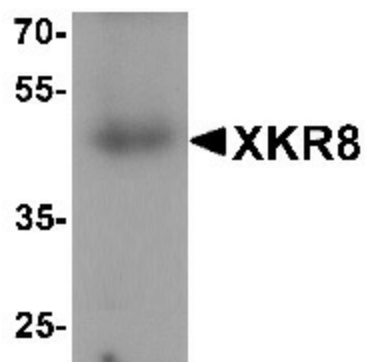
Product Type:	Primary Antibodies
Applications:	IF, IHC, WB
Recommended Dilution:	WB: 1 - 2 ug/mL, IHC: 5 ug/mL, IF: 20 ug/mL
Reactivity:	Human
Host:	Rabbit
Isotype:	IgG
Clonality:	Polyclonal
Immunogen:	XKR8 antibody was raised against a 15 amino acid peptide near the carboxy terminus of human XKR8.
Formulation:	PBS containing 0.02% sodium azide.
Concentration:	1 mg/ml
Purification:	XKR8 antibody is affinity chromatography purified via peptide column.
Conjugation:	Unconjugated
Storage:	Store at -20°C as received.
Stability:	Stable for 12 months from date of receipt.
Predicted Protein Size:	Predicted: 43 kDa; Observed: 47 kDa
Gene Name:	XK related 8
Database Link:	NP_060523 Entrez Gene 55113 Human Q9H6D3
Background:	The XK Kell blood group complex subunit-related family member 8 (XKR8) is a member of a family of proteins that promote the phagocytosis of dying cells by altering the phospholipid distribution of the plasma membrane (1). XKR8 is thought to be a ??cramblase?? an enzyme that eliminates the asymmetry of phospholipid distribution in the plasma membrane. In apoptotic cells, XKR8 promotes the cell-surface exposure of phosphatidylserine (PtdSer) which serves as a signal for phagocytosis (1,2).
Synonyms:	hXkr8; XRG8



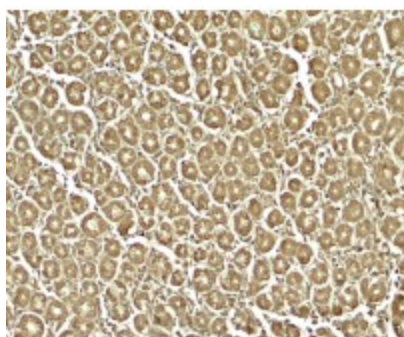
[View online »](#)

Protein Families: Transmembrane

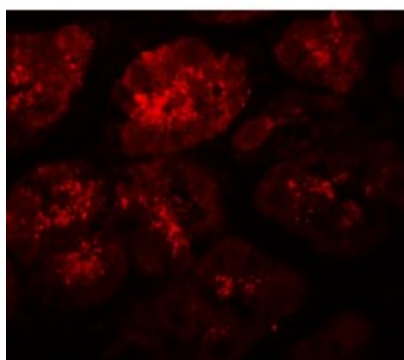
Product images:



Western blot analysis of XKR8 in human stomach tissue lysate with XKR8 antibody at 1 ug/mL.



Immunohistochemistry of XKR8 in human stomach tissue with XKR8 antibody at 5 ug/mL.



Immunofluorescence of XKR8 in human stomach tissue with XKR8 antibody at 20 ug/mL.