

Product datasheet for **TA349095**

MAP1LC3A Rabbit Polyclonal Antibody

Product data:

| | |
|-------------------------|--|
| Product Type: | Primary Antibodies |
| Applications: | IHC, WB |
| Recommended Dilution: | WB: 0.5 - 1 ug/mL, IHC: 5 ug/mL |
| Reactivity: | Human, Mouse, Rat |
| Host: | Rabbit |
| Isotype: | IgG |
| Clonality: | Polyclonal |
| Immunogen: | MAP1LC3 antibody was raised against a 12 amino acid peptide near the center of human MAP1LC3A. |
| Formulation: | PBS containing 0.02% sodium azide. |
| Concentration: | 1 mg/ml |
| Purification: | MAP1LC3 antibody is affinity chromatography purified via peptide column. |
| Conjugation: | Unconjugated |
| Storage: | Store at -20°C as received. |
| Stability: | Stable for 12 months from date of receipt. |
| Predicted Protein Size: | Predicted: 13 kDa; Observed: 18 kDa |
| Gene Name: | microtubule associated protein 1 light chain 3 alpha |
| Database Link: | NP_115903 Entrez Gene 84557 Human Q9H492 |

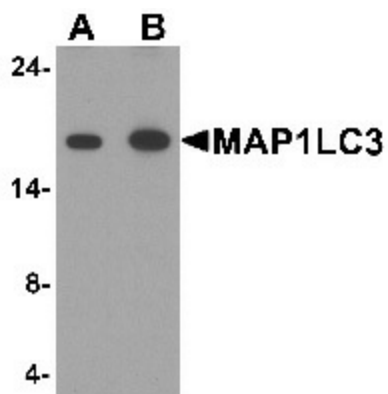
Background: Microtubule-associated proteins (MAPs) regulate microtubule stability and play critical roles in neuronal development and plasticity (1). MAP1LC3 is a subfamily of three related proteins belonging to the MAP1 LC3 family and it includes MAP1LC3A, MAP1LC3B, and MAP1LC3C (2). MAP1LC3 is the mammalian homolog of yeast ATG8 and is essential for autophagy and associated with the autophagosome membranes after processing (3). The three isoforms exhibit distinct expression patterns and both MAP1LC3A and MAP1LC3B but not MAP1LC3C, are post-translationally modified, suggesting the three isoforms may have different physiological functions (4).



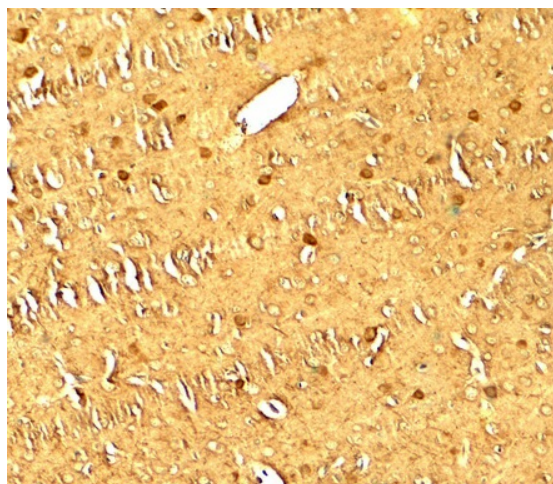
[View online »](#)

Synonyms: CAMEO; HOD; HOP; LAGY; NECC1; OB1; SMAP31; TOTO

Product images:



Western blot analysis of MAP1LC3 in human brain tissue lysate with MAP1LC3 antibody at (A) 1 and (B) 2 $\mu\text{g}/\text{mL}$.



Immunohistochemistry of MAP1LC3 in rat brain tissue with MAP1LC3 antibody at 5 $\mu\text{g}/\text{mL}$.