

Product datasheet for **TA349092**

SMURF1 Rabbit Polyclonal Antibody

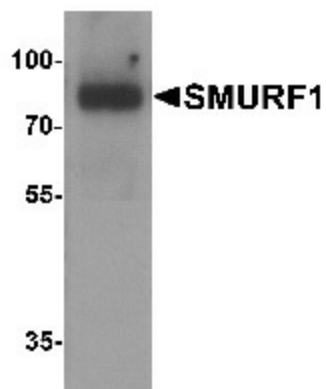
Product data:

Product Type:	Primary Antibodies
Applications:	IHC, WB
Recommended Dilution:	WB: 1 - 2 ug/mL, IHC: 5 ug/mL
Reactivity:	Human, Mouse, Rat
Host:	Rabbit
Isotype:	IgG
Clonality:	Polyclonal
Immunogen:	SMURF1 antibody was raised against a 16 amino acid peptide near the amino terminus of human SMURF1.
Formulation:	PBS containing 0.02% sodium azide.
Concentration:	1 mg/ml
Purification:	SMURF1 antibody is affinity chromatography purified via peptide column.
Conjugation:	Unconjugated
Storage:	Store at -20°C as received.
Stability:	Stable for 12 months from date of receipt.
Predicted Protein Size:	Predicted: 80, 83 kDa; Observed: 78 kDa
Gene Name:	SMAD specific E3 ubiquitin protein ligase 1
Database Link:	NP_065162 Entrez Gene 57154 Human Q9HCE7
Background:	SMURF1 (SMAD ubiquitin regulatory factor 1) is a negative regulator of TGF-beta signaling (1). SMURF1 and SMURF2 are members of HECT domain E3 ubiquitin ligase which are involved in the enzymatic reactions of the Ub conjugating pathway (1,2). SMURF1 negatively regulates osteoblast activity and response to bone morphogenesis protein (BMP) through controlling MEKK2 degradation (3). SMURF1 has recently been shown to play a role in breast cancer cell migration and invasion through the downregulation of RhoA (4).
Synonyms:	STAG1; TMEPAI

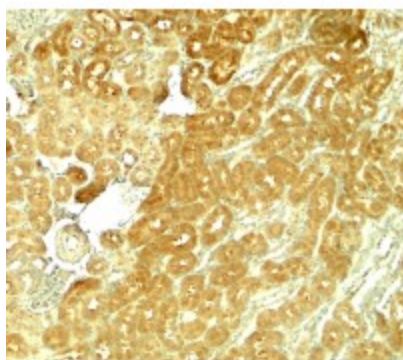


[View online »](#)

Product images:



Western blot analysis of SMURF1 in 293 cell lysate with SMURF1 antibody at 1 ug/mL.



Immunohistochemistry of SMURF1 in rat kidney tissue with SMURF1 antibody at 5 ug/mL.