

Product datasheet for **TA349091**

Rubicon (RUBCN) Rabbit Polyclonal Antibody

Product data:

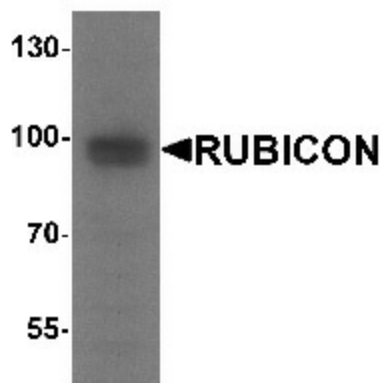
Product Type:	Primary Antibodies
Applications:	IF, IHC, WB
Recommended Dilution:	WB: 1 - 2 ug/mL, IHC: 5 ug/mL, IF: 20 ug/mL
Reactivity:	Human, Mouse, Rat
Host:	Rabbit
Isotype:	IgG
Clonality:	Polyclonal
Immunogen:	Rubicon antibody was raised against a 16 amino acid peptide near the amino terminus of human Rubicon.
Formulation:	PBS containing 0.02% sodium azide.
Concentration:	1 mg/ml
Purification:	Rubicon antibody is affinity chromatography purified via peptide column.
Conjugation:	Unconjugated
Storage:	Store at -20°C as received.
Stability:	Stable for 12 months from date of receipt.
Predicted Protein Size:	Predicted: 90, 101, 109 kDa; Observed: 91, 99 kDa
Gene Name:	RUN and cysteine rich domain containing beclin 1 interacting protein
Database Link:	XP_005269431 Entrez Gene 9711 Human Q92622
Background:	Two Beclin-1-interacting proteins, the run domain Beclin-1 interacting and cysteine-rich containing protein (Rubicon) and ATG14L, reciprocally regulate autophagy at different stages. Knockdown of Rubicon caused enhancement of autophagy while that of ATG14L caused a defect in autophagosome formation (1). Rubicon functions as part of a Beclin-1-PIK3C3-containing autophagy complex and is also an essential, positive regulator of the NADPH oxidase complex (2). Upon microbial infection or TLR2 activation, Rubicon interacts with the CYBA subunit of the NADPH oxidase complex, leading to a burst of reactive oxygen species and inflammatory cytokines (2).



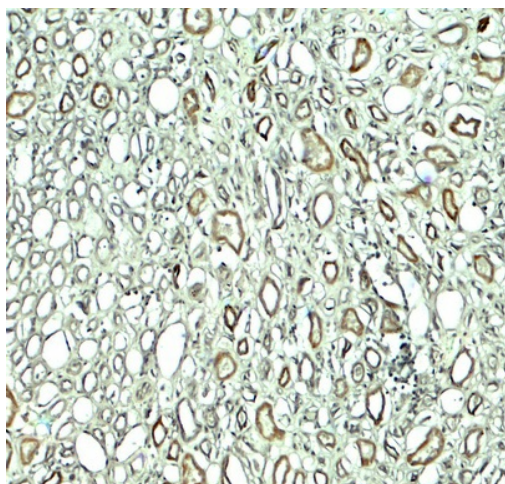
[View online »](#)

Synonyms: ERp-72; ERP70; ERP72

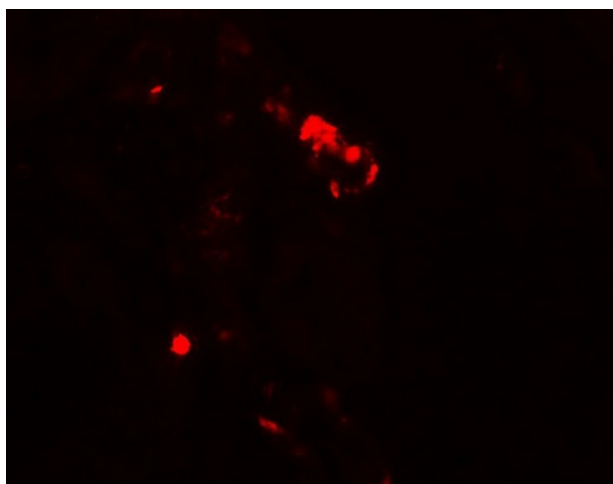
Product images:



Western blot analysis of Rubicon in 293 cell lysate with Rubicon antibody at 1 ug/mL.



Immunohistochemistry of RUBICON in human kidney tissue with RUBICON antibody at 5 ug/mL.



Immunofluorescence of RUBICON in human kidney tissue with RUBICON antibody at 20 ug/mL.