

## Product datasheet for **TA349087**

### Sex Hormone Binding Globulin (SHBG) Rabbit Polyclonal Antibody

#### Product data:

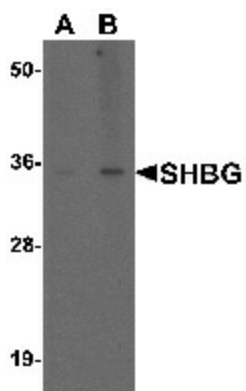
Product Type:	Primary Antibodies
Applications:	IF, WB
Recommended Dilution:	WB: 1 - 2 ug/mL, IF: 20 ug/mL
Reactivity:	Human, Mouse, Rat
Host:	Rabbit
Isotype:	IgG
Clonality:	Polyclonal
Immunogen:	SHBG antibody was raised against a 16 amino acid peptide near the center of human SHBG.
Formulation:	PBS containing 0.02% sodium azide.
Concentration:	1 mg/ml
Purification:	SHBG antibody is affinity chromatography purified via peptide column.
Conjugation:	Unconjugated
Storage:	Antibody can be stored at 4°C up to one year. Antibodies should not be exposed to prolonged high temperatures.
Stability:	Stable for 12 months from date of receipt.
Predicted Protein Size:	Predicted: 25, 26, 31, 32, 38, 44 kDa; Observed: 35
Gene Name:	sex hormone binding globulin
Database Link:	<a href="#">NP_001031</a> <a href="#">Entrez Gene 20415 Mouse</a> <a href="#">Entrez Gene 24775 Rat</a> <a href="#">Entrez Gene 6462 Human</a> <a href="#">P04278</a>
Background:	SHBG is a steroid binding protein that was first described as a plasma protein secreted by the liver and is thought to participate in the regulation of steroid responses. SHBG transports androgens and estrogens in the blood, binding each steroid molecule as a dimer formed from identical or nearly identical monomers (1). Low plasma SHBG levels are associated with obesity, abdominal adiposity, metabolic syndrome, and predict the development of type 2 diabetes (2,3). Polymorphisms in this gene have been associated with polycystic ovary syndrome and type 2 diabetes mellitus (4).
Synonyms:	ABP; SBP; TEBG



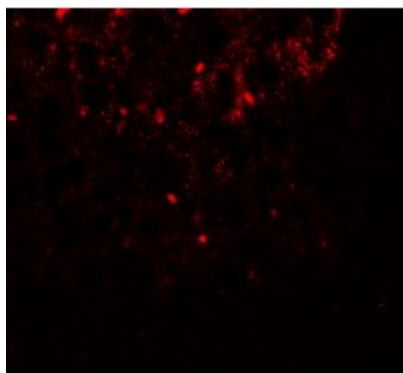
[View online »](#)

Protein Families: Druggable Genome, Secreted Protein

### Product images:



Western blot analysis of SHBG in human liver tissue lysate with SHBG antibody at (A) 1 and (B) 2 ug/mL.



Immunofluorescence of SHBG in mouse liver tissue with SHBG antibody at 20 ug/mL.