

## Product datasheet for **TA349086**

### LIN54 Rabbit Polyclonal Antibody

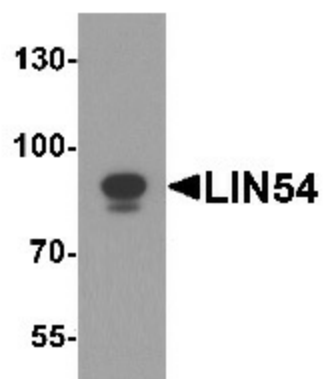
#### Product data:

Product Type:	Primary Antibodies
Applications:	WB
Recommended Dilution:	WB: 1 - 2 ug/mL
Reactivity:	Human, Mouse, Rat
Host:	Rabbit
Isotype:	IgG
Clonality:	Polyclonal
Immunogen:	LIN54 antibody was raised against a 16 amino acid peptide near the carboxy terminus of human LIN54.
Formulation:	PBS containing 0.02% sodium azide.
Concentration:	1 mg/ml
Purification:	LIN54 antibody is affinity chromatography purified via peptide column.
Conjugation:	Unconjugated
Storage:	Store at -20°C as received.
Stability:	Stable for 12 months from date of receipt.
Predicted Protein Size:	Predicted: 88 kDa; Observed: 82 kDa
Gene Name:	lin-54 DREAM MuvB core complex component
Database Link:	<a href="#">NP_919258</a> <a href="#">Entrez Gene 132660 Human</a> <a href="#">Q6MZP7</a>
Background:	LIN54 is a component of the LIN, or DREAM, complex, an essential regulator of cell cycle genes. This complex functions as a transcriptional repressor by binding to promoters of E2F target genes that regulate the G1/S transition (1). LIN54 is required for cell cycle progression and can bind to the cdc2 promoter in a sequence-specific manner (2).
Synonyms:	Zfp393; ZNF393



[View online »](#)

## Product images:



Western blot analysis of LIN54 in HeLa cell lysate with LIN54 antibody at 1 ug/mL.