

## Product datasheet for **TA349085**

### BAMBI Rabbit Polyclonal Antibody

#### Product data:

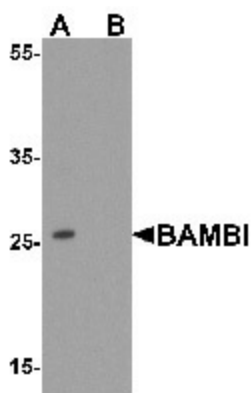
|                         |  |
|-------------------------|--|
| Product Type:           | Primary Antibodies   |
| Applications:           | IF, IHC, WB  |
| Recommended Dilution:   | WB: 1 - 2 ug/mL, IHC: 5 ug/mL, IF: 20 ug/mL  |
| Reactivity:             | Human, Mouse, Rat  |
| Host:                   | Rabbit   |
| Isotype:                | IgG  |
| Clonality:              | Polyclonal   |
| Immunogen:              | BAMBI antibody was raised against a 17 amino acid peptide near the center of human BAMBI.  |
| Formulation:            | PBS containing 0.02% sodium azide.   |
| Concentration:          | 1 mg/ml  |
| Purification:           | BAMBI antibody is affinity chromatography purified via peptide column.   |
| Conjugation:            | Unconjugated   |
| Storage:                | Store at -20°C as received.  |
| Stability:              | Stable for 12 months from date of receipt.   |
| Predicted Protein Size: | Predicted: 29 kDa; Observed: 26 kDa  |
| Gene Name:              | BMP and activin membrane-bound inhibitor   |
| Database Link:          | <a href="#">NP_036474</a><br><a href="#">Entrez Gene 68010 MouseEntrez Gene 83837 RatEntrez Gene 25805 Human Q13145</a>  |
| Background:             | BAMBI (BMP and activin membrane-bound inhibitor homolog, NMA) is a membrane spanning glycoprotein that acts as a negative regulator of TGF-beta signaling during development (1). BAMBI transcription regulation is under the influence of beta-catenin, BMP, smad3 and smad4 (2,3). BAMBI expression can increase in colorectal and hepatocellular carcinomas relative to non-cancerous tissues (4). BAMBI is expressed at high levels during odontogenesis. BAMBI is coexpressed with Bmp-4 during early Xenopus embryogenesis and can be detected in poorly metastatic human melanoma cell lines (5). |
| Synonyms:               | NMA  |



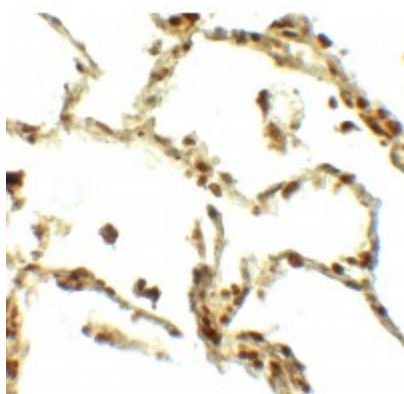
[View online »](#)

Protein Families: Transmembrane

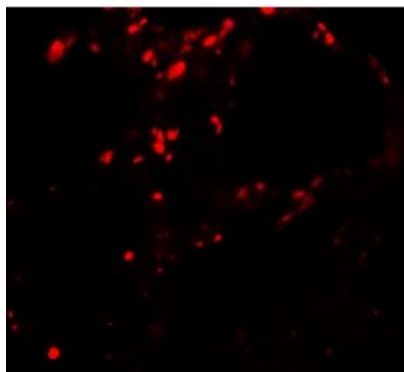
### Product images:



Western blot analysis of BAMBI in mouse lung tissue lysate with BAMBI antibody at 1 ug/mL in (A) the absence and (B) the presence of blocking peptide.



Immunohistochemistry of BAMBI in human lung tissue with BAMBI antibody at 5 ug/mL.



Immunofluorescence of BAMBI in human lung tissue with BAMBI antibody at 20 ug/mL.